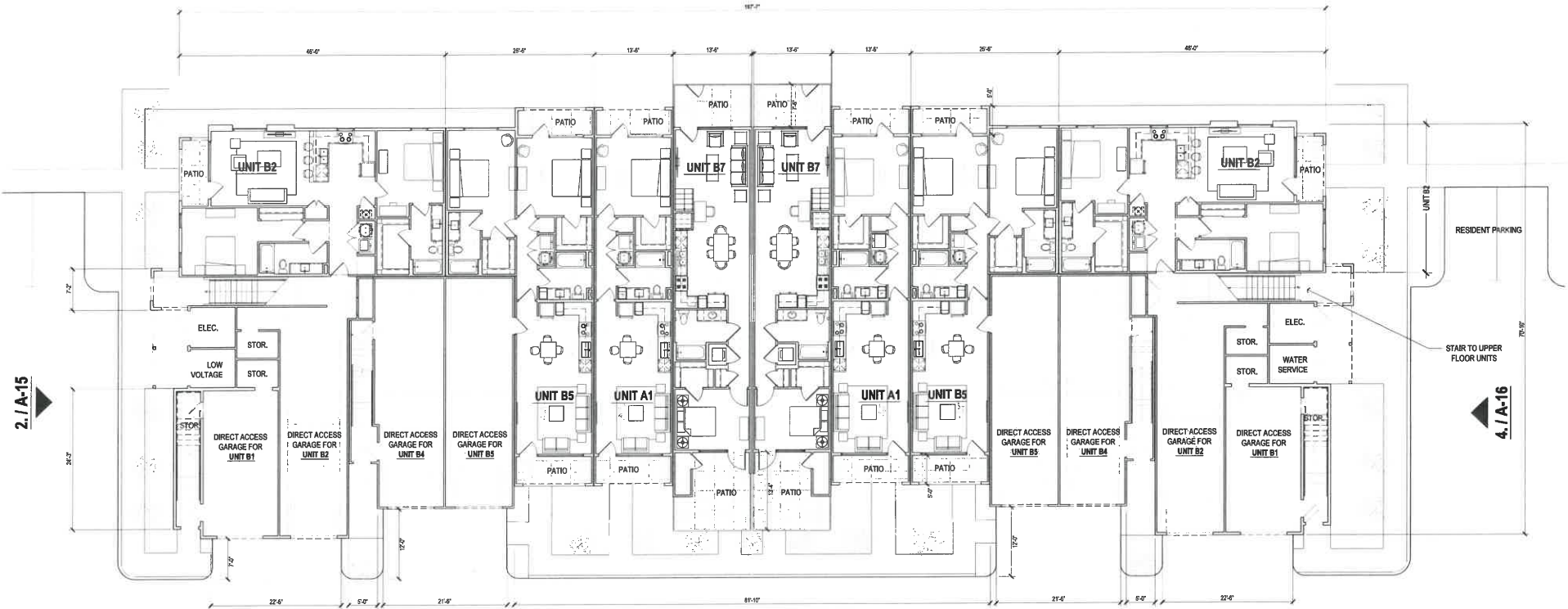


3./A-16



1./A-15

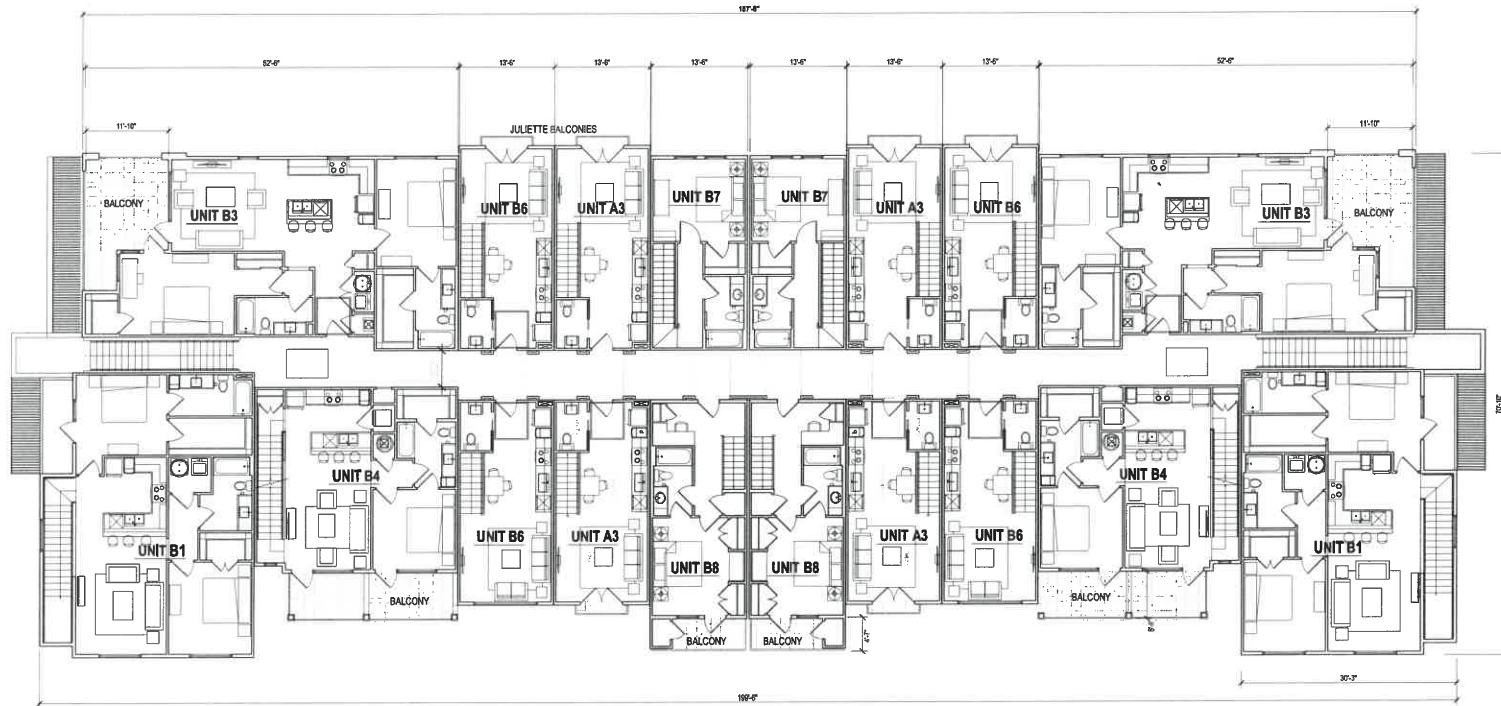
0' 8' 16' 32'
SCALE 1/8" = 1'-0" (ON 24 x 36 SHEET)

PROJECT: **THE WREN**
ROSEMOUNT AVE., CATHEDRAL CITY, APN 670-110-043
HPA PROJECT# 2023158 PLANNING # 23-001

ARCHITECT: VELY ZAJEC, vely@humphreys.com, 949.468.5866
HUMPHREYS & PARTNERS ARCHITECTS, L.P.
5339 Alpha Rd., Suite 300, Dallas, TX 75240 | 972.701.9636 | www.humphreys.com

OWNER: STEFAN VOGEL, stefan@buldbys2.com, 626.277.6782
COACHELLA VALLEY COMMUNITY DEVELOPMENT GROUP
36101 BOB HOPE DRIVE, SUITE E5, RANCHO MIRAGE, CA 92270

3. / A-16



2. / A-15

4. / A-16

1. / A-15



PROJECT: THE WREN
ROSEMOUNT AVE., CATHEDRAL CITY, APN 670-110-043
HPA PROJECT# 2023158 PLANNING # 23-001

ARCHITECT: VELY ZAJEC, vely@humphreys.com, 949.468.5866
HUMPHREYS & PARTNERS ARCHITECTS, L.P.
5339 Alpha Rd., Suite 300, Dallas, TX 75240 | 972.701.9636 | www.humphreys.com

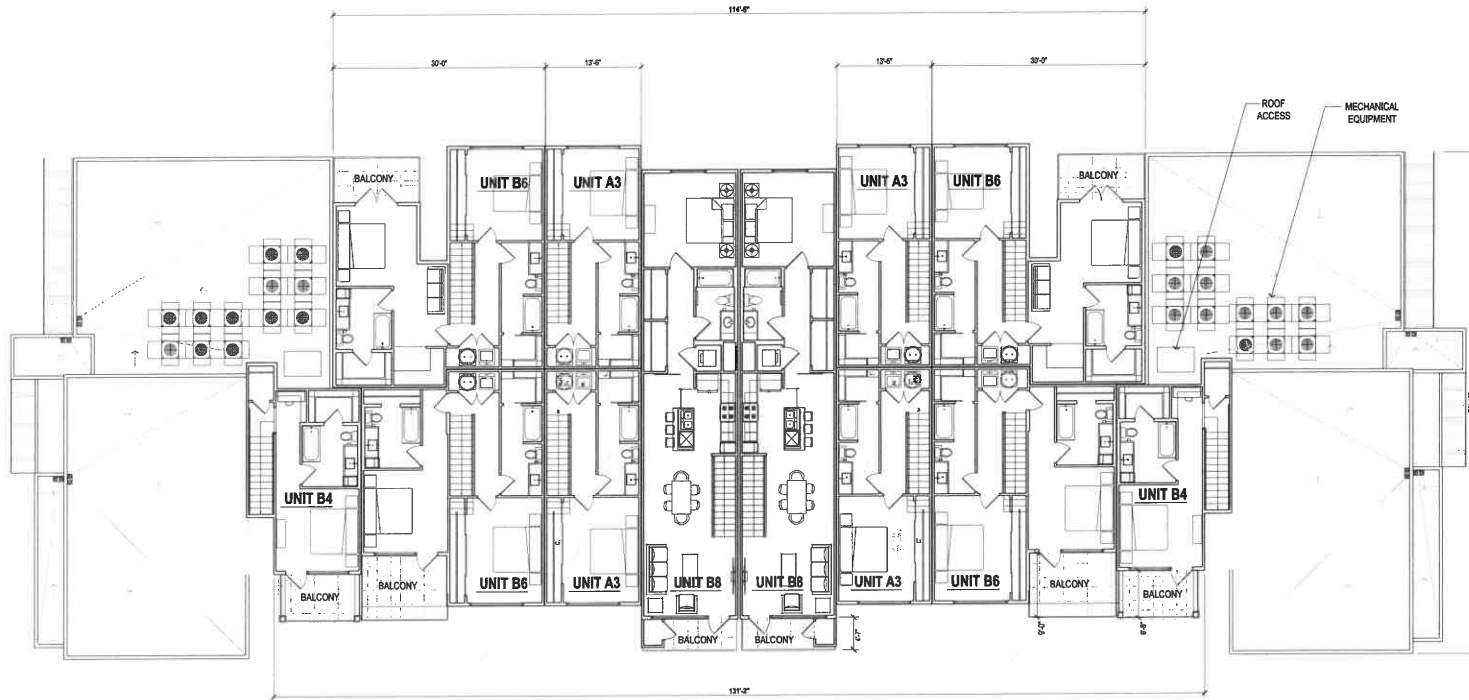
OWNER: STEFAN VOGEL, stefan@bulldogs2.com, 626.277.6782
COACHELLA VALLEY COMMUNITY DEVELOPMENT GROUP
36101 BOB HOPE DRIVE, SUITE E5, RANCHO MIRAGE, CA 92270

3. / A-16

2. / A-15

4. / A-16

1. / A-15



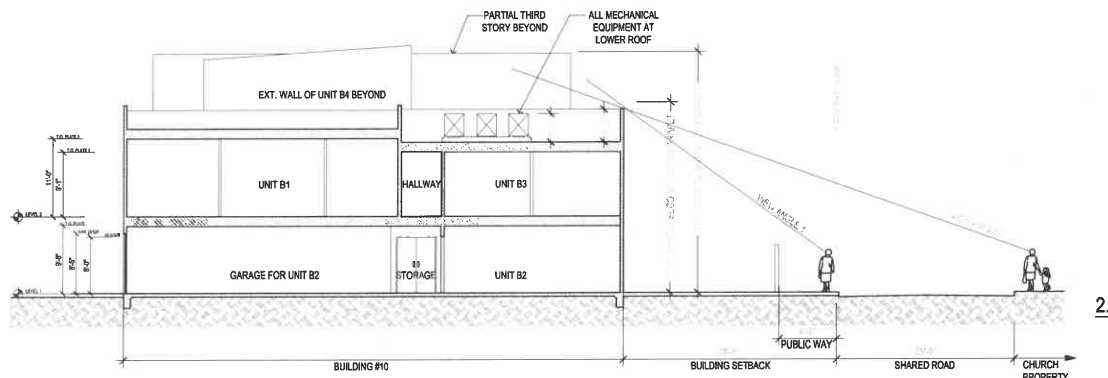
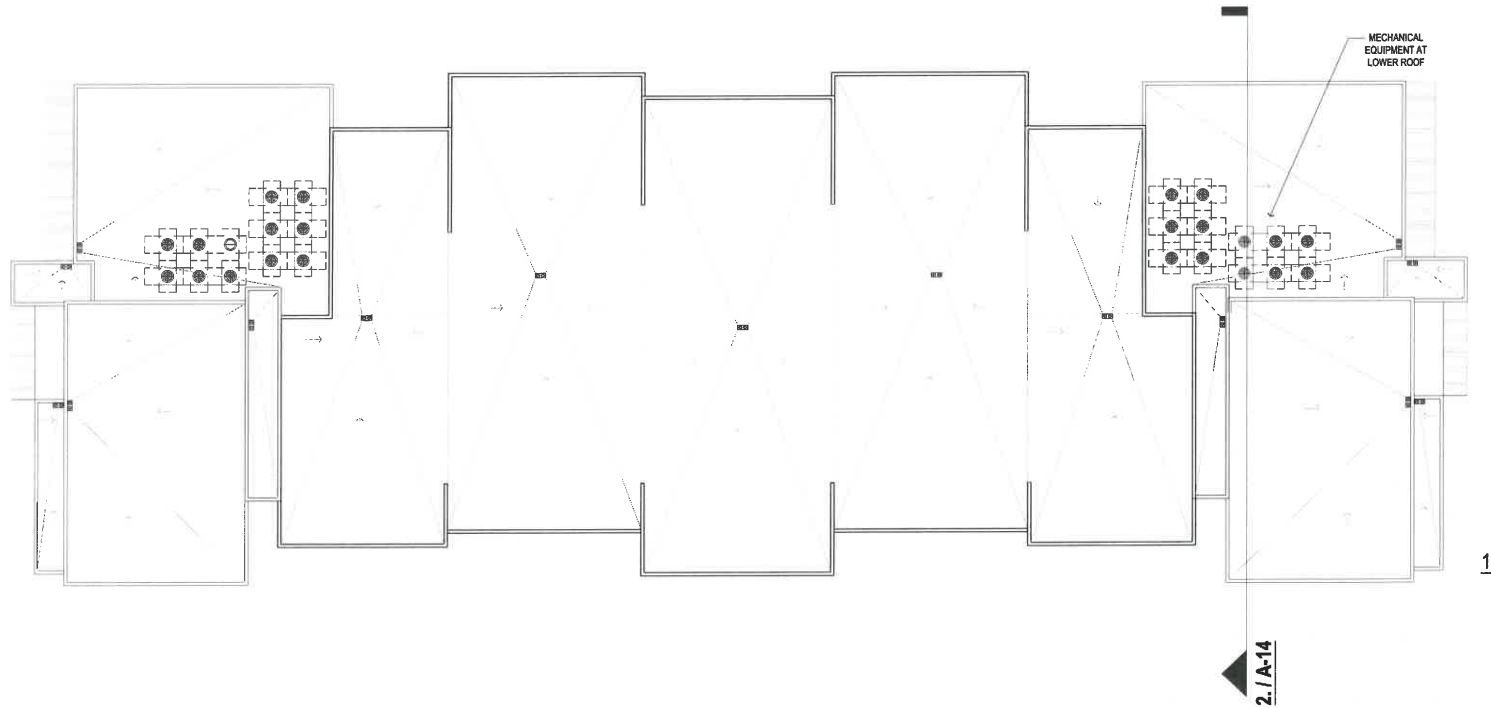
0' 8' 16' 32'
SCALE $\frac{1}{8}" = 1'-0"$ (ON 24 x 36 SHEET)

PROJECT: **THE WREN**
ROSEMOUNT AVE., CATHEDRAL CITY, APN 670-110-043
HPA PROJECT# 2023158 PLANNING # 23-001

ARCHITECT: VELY ZAJEC, vely@humphreys.com, 949.468.5866
HUMPHREYS & PARTNERS ARCHITECTS, L.P.
5339 Alpha Rd., Suite 300, Dallas, TX 75240 | 972.701.9636 | www.humphreys.com

OWNER: STEFAN VOGEL, stefan@buildbys2.com, 626.277.6782
COACHELLA VALLEY COMMUNITY DEVELOPMENT GROUP
36101 BOB HOPE DRIVE, SUITE E5, RANCHO MIRAGE, CA 92270

© 2023 by HUMPHREYS & PARTNERS ARCHITECTS, L.P. The arrangements depicted herein are the sole property of Humphreys & Partners Architects, L.P. and may not be reproduced in any form without the written permission. Architectural conceptual site plans are for feasibility purposes only. Revisions may occur due to further investigation from regulatory authorities and building code analysis. Dimensions shown are at a strategic intent only. Refer to business and civil drawings for technical information and measurements.



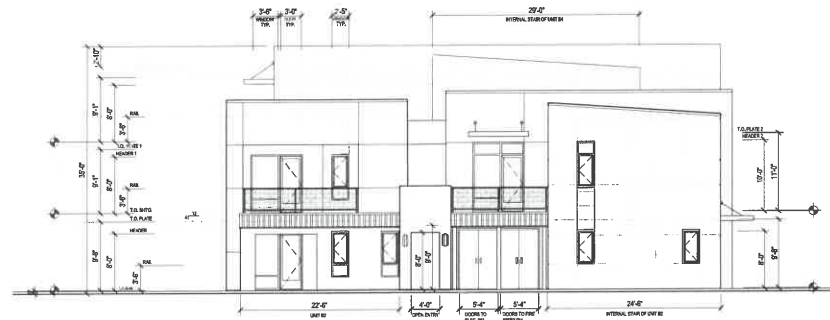
0' 8' 16' 32'

SCALE $\frac{1}{8}" = 1'-0"$ (ON 24 x 36 SHEET)

PROJECT: **THE WREN**
 ROSEMOUNT AVE., CATHEDRAL CITY, APN 670-110-043
 HPA PROJECT# 2023158 PLANNING # 23-001

ARCHITECT: VELY ZAJEC, vely@humphreys.com, 949.468.5866
HUMPHREYS & PARTNERS ARCHITECTS, L.P.
 5339 Alpha Rd., Suite 300, Dallas, TX 75240 | 972.701.9636 | www.humphreys.com

OWNER: STEFAN VOGEL, stefan@buildbys2.com, 626.277.6782
COACHELLA VALLEY COMMUNITY DEVELOPMENT GROUP
 36101 BOB HOPE DRIVE, SUITE E5, RANCHO MIRAGE, CA 92270



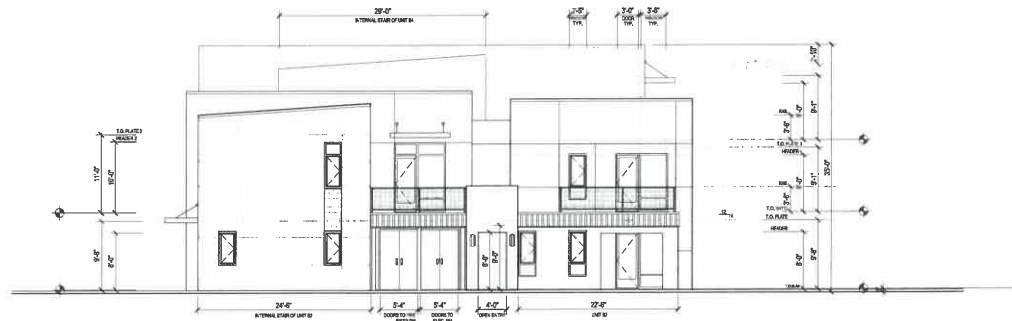
0' 8' 16' 32'
SCALE $\frac{3}{8}" = 1'-0"$ (ON 24 x 36 SHEET)

PROJECT: **THE WREN**
ROSEMOUNT AVE., CATHEDRAL CITY, APN 670-110-043
HPA PROJECT# 2023158 PLANNING # 23-001

ARCHITECT: VELY ZAJEC, vely@humphreys.com, 949.468.5866
HUMPHREYS & PARTNERS ARCHITECTS, L.P.
5339 Alpha Rd., Suite 300, Dallas, TX 75240 | 972.701.9636 | www.humphreys.com

OWNER: STEFAN VOGEL, stefan@buildbys2.com, 626.277.6782
COACHELLA VALLEY COMMUNITY DEVELOPMENT GROUP
36101 BOB HOPE DRIVE, SUITE E5, RANCHO MIRAGE, CA 92270

© 2023 by HUMPHREYS & PARTNERS ARCHITECTS, L.P. The arrangements depicted herein are the sole property of Humphreys & Partners Architects, L.P. and may not be reproduced in any form without its written permission. Architectural conceptual site plans are for feasibility purposes only. Revisions may occur due to further investigation from regulatory authorities and building code analysis. Dimensions shown are at a strategic intent only. Refer to surveys and civil drawings for technical information and measurements.



BACK AND RIGHT ELEVATION

0' 8' 16' 32'

SCALE $\frac{1}{8}" = 1'-0"$ (ON 24 x 36 SHEET)

PROJECT: THE WREN
 ROSEMOUNT AVE., CATHEDRAL CITY, APN 670-110-043
 HPA PROJECT# 2023158 PLANNING # 23-001

ARCHITECT: VELY ZAJEC, vely@humphreys.com, 949.468.5866
HUMPHREYS & PARTNERS ARCHITECTS, L.P.
 5339 Alpha Rd., Suite 300, Dallas, TX 75240 | 972.701.9636 | www.humphreys.com

OWNER: STEFAN VOGEL, stefan@buildbys2.com, 626.277.6782
COACHELLA VALLEY COMMUNITY DEVELOPMENT GROUP
 36101 BOB HOPE DRIVE, SUITE E5, RANCHO MIRAGE, CA 92270



1.



2.

0' 8' 16' 32'
SCALE $\frac{3}{8}" = 1'-0"$ (ON 24 x 36 SHEET)

PROJECT: **THE WREN**
ROSEMOUNT AVE., CATHEDRAL CITY, APN 670-110-043
HPA PROJECT# 2023158 PLANNING # 23-001

ARCHITECT: VELY ZAJEC, vely@humphreys.com, 949.468.5866
HUMPHREYS & PARTNERS ARCHITECTS, L.P.
5339 Alpha Rd., Suite 300, Dallas, TX 75240 | 972.701.9636 | www.humphreys.com

OWNER: STEFAN VOGEL, stefan@buildbys2.com, 626.277.6782
COACHELLA VALLEY COMMUNITY DEVELOPMENT GROUP
36101 BOB HOPE DRIVE, SUITE E5, RANCHO MIRAGE, CA 92270

© 2023 by HUMPHREYS & PARTNERS ARCHITECTS, L.P. The arrangements depicted herein are the sole property of Humphreys & Partners Architects, L.P. and may not be reproduced in any form without the written permission. Architectural conceptual site plans are for feasibility purposes only. Revisions may occur due to further investigations from regulatory authorities and building code analysis. Dimensions shown are of a strategic intent only. Refer to section and detail drawings for technical information and measurements.



0' 8' 16' 32'
SCALE $\frac{1}{8}" = 1'-0"$ (ON 24 x 36 SHEET)

PROJECT: **THE WREN**
ROSEMOUNT AVE., CATHEDRAL CITY, APN 670-110-043
HPA PROJECT# 2023158 PLANNING # 23-001

ARCHITECT: VELY ZAJEC, vely@humphreys.com, 949.468.5866
HUMPHREYS & PARTNERS ARCHITECTS, L.P.
5339 Alpha Rd., Suite 300, Dallas, TX 75240 | 972.701.9536 | www.humphreys.com

OWNER: STEFAN VOGEL, stefan@buildbys2.com, 626.277.6782
COACHELLA VALLEY COMMUNITY DEVELOPMENT GROUP
36101 BOB HOPE DRIVE, SUITE E5, RANCHO MIRAGE, CA 92270

© 2023 by HUMPHREYS & PARTNERS ARCHITECTS, L.P. The arrangements depicted herein are the sole property of Humphreys & Partners Architects, L.P. and may not be reproduced in any form without its written permission. Architectural conceptual site plans are for feasibility purposes only. Boundaries may occur due to further investigation from regulatory authorities and building code controls. Dimensions shown are of a strategic intent only. Refer to surveys and civil drawings for technical information and measurements.