

IN THE CITY OF CATHEDRAL CITY, COUNTY OF RIVERSIDE, STATE OF CALIFORNIA

# Amended Tract Map No. 31774

BEING A SUBDIVISION OF PARCEL 1 OF PARCEL MAP NO. 8471 AS SHOWN ON MAP BOOK 31 OF PARCEL MAPS, PAGE 19 AND THE WESTERLY 34 ACRES EXCEPTING THE WEST 10 ACRES OF THE SOUTHEAST QUARTER OF SECTION 15, TOWNSHIP 4 SOUTH, RANGE 5 EAST, SAN BERNARDINO MERIDIAN, ALSO BEING A SUBDIVISION OF TRACT MAP NO. 31774, AS SHOWN BY MAP BOOK 386 PAGES 43 THROUGH 50, RECORDS OF RIVERSIDE COUNTY, CALIFORNIA.

CITY

## RECORDER'S STATEMENT

FILED THIS 30<sup>TH</sup> DAY OF MARCH, 2006  
AT 9:50AM IN BOOK 399 OF MAPS, AT  
PAGES 40-48, AT THE REQUEST OF THE  
CITY CLERK OF THE CITY OF CATHEDRAL CITY

NO. 8006-0225814

FEE \$23.00

LARRY L. WARD  
COUNTY ASSESSOR/CLERK/RECORDER

BY: Dianne Dew DEPUTY  
SUBDIVISION GUARANTEE: STEWART TITLE INSURANCE COMPANY

SHEET 1  
OF 9  
SHEETS

397  
410  
Amended Map

## SURVEYOR'S STATEMENT

I HEREBY STATE THAT I AM A LICENSED LAND SURVEYOR OF THE STATE OF CALIFORNIA AND THAT THIS AMENDED MAP, CONSISTING OF 8 SHEETS, IS THE SAME AS THE ORIGINAL MAP OF TRACT NO. 31774 AS RECORDED, EXCEPT FOR THE CORRECTIONS AND CHANGES THERETO LISTED AS FOLLOWS:

THE ADDITION OF SHEET 1A, A NEW TITLE SHEET:

- SHEET 1: ORIGINAL TITLE SHEET WITH SELECTED STATEMENTS DELETED;  
SHEET 2: AREA TABLES: THE LOT AREAS WERE CORRECTED FOR LOTS 1-6, 9-21, 31, 32, 49, 50, 60-70, 72-76, D-F, I, K, N-P, R, AA, CC, DD;  
SHEET 3: THE SIZE AND SHAPE OF LOTS 1 THROUGH 6, 9 THROUGH 21, K, N, AND AA WERE CHANGED; THE POSITIONS OF LOTS 7, 8, 127 THROUGH 142, AND LOT U WERE SHIFTED, BUT WITH NO CHANGE IN SIZE OR SHAPE;  
SHEET 4: THE SIZE AND SHAPE OF LOTS 31, 32, 49, AND 50 WERE CHANGED;  
SHEET 5: THE SIZE AND SHAPE OF LOTS F, O, P, CC AND DD WERE CHANGED;  
SHEET 7: THE CURVE DATA FOR CURVES C2 AND C5 WAS CORRECTED;  
SHEET 8: THE SIZE AND SHAPE OF LOTS 60 THROUGH 70, 72, THROUGH 76, AND LOTS I AND K WERE CHANGED; CURVE DATA FOR CURVE C4 WAS CORRECTED;  
SHEET 8: THE SIZE AND SHAPE OF LOTS D, E, AND DD WERE CHANGED; COURSES L3 AND L4 WERE ADDED TO THE LINE DATA TABLE FOR CLARITY; COURSE L1 WAS CORRECTED; CURVE C4 WAS DELETED;

I ALSO CERTIFY THAT THIS AMENDED MAP WAS PREPARED PURSUANT TO SECTIONS 66469 AND 66470 OF THE GOVERNMENT CODE (SUBDIVISION MAP ACT), AND THAT THE RECORD OWNER OF THE LOTS AND LAND AFFECTED BY THE CORRECTIONS AS DESCRIBED ABOVE IS:

RAMON SANTORO GROUP, LLC,  
A CALIFORNIA LIMITED LIABILITY COMPANY;

I ALSO CERTIFY THAT THE ABOVE CORRECTIONS DO NOT AFFECT ANY PROPERTY RIGHTS OF THE ABOVE OWNER.

STEVEN J. VAN, P.L.S. 1800  
EXPIRATION DATE: 06/30/07

3-22-06  
DATE



## CITY ENGINEER'S STATEMENT

I HEREBY STATE THAT PURSUANT TO SECTION 66471(a) OF THE GOVERNMENT CODE, THE WITHIN AMENDED MAP OF TRACT NO. 31774 HAS BEEN EXAMINED BY THE UNDERSIGNED, AND MY EXAMINATION DISCLOSES THAT IT IS THE SAME AS THE MAP OF TRACT NO. 31774 AS RECORDED EXCEPT FOR THE CORRECTIONS THERETO AS LISTED IN THE SURVEYOR'S STATEMENT HEREON, AND THAT THE SAID CORRECTIONS AND CHANGES ARE AUTHORIZED BY AND COMPLY WITH SECTION 66469 OF THE GOVERNMENT CODE (SUBDIVISION MAP ACT).

N. D. Bayne  
WILLIAM O. BAYNE, P.E. 18262  
EXPIRATION DATE: 06/30/2007  
CITY ENGINEER

3/23/06  
DATE



AMENDED

# Tract Map No. 31774

SHEET 2 OF 9 SHEETS

BEING A SUBDIVISION OF PARCEL 1 OF PARCEL MAP NO. 8471 AS SHOWN ON MAP BOOK 31 OF PARCEL MAPS, PAGE 19 AND THE WESTERLY 34 ACRES EXCEPTING THE WEST 10 ACRES OF THE SOUTHEAST QUARTER OF SECTION 15, TOWNSHIP 4 SOUTH, RANGE 5 EAST, SAN BERNARDINO MERIDIAN, ALSO BEING A SUBDIVISION OF TRACT MAP NO. 31774 AS SHOWN BY MAP BOOK 386 PAGES 43 THROUGH 50, RECORDS OF RIVERSIDE COUNTY, CALIFORNIA.

## OWNER'S STATEMENT

WE HEREBY STATE THAT WE ARE THE OWNERS OF THE LAND INCLUDED WITHIN THE SUBDIVISION SHOWN HEREON, THAT WE ARE THE ONLY PERSONS WHOSE CONSENT IS NECESSARY TO PASS A DEED TO THE LAND THAT WE ARE SUBJECT TO THE HAVING AND RECORDING OF THIS SUBDIVISION MAP AS SHOWN WITHIN THE INDICATED BORDER LINE.

WE HEREBY RESERVE TO THE CITY OF CATHEDRAL CITY AN EASEMENT OVER LOTS "A" AND "B", INCLUDING, FOR PUBLIC STREET AND PUBLIC UTILITY PURPOSES AS SHOWN HEREON.

WE HEREBY RESERVE TO THE CITY OF CATHEDRAL CITY, THE EASEMENT FOR PUBLIC UTILITY AND FOR RIGHT OF WAY AND EASEMENT OF CONDUIT AND SUBSTATION, VEHICLES, OVER AND ACROSS LOTS "C" THROUGH "L", INCLUDING, SAID LOTS "C" THROUGH "L", ARE RETAINED AS PRIVATE STREETS FOR OURSELVES, SUCCESSORS, AGENTS AND LOT OWNERS WITHIN THIS TRACT.

WE HEREBY OFFER FOR RESERVATION TO THE COACHELLA VALLEY WATER DISTRICT AN EASEMENT OVER LOTS "M", "N", "O", "P", "Q", "R", "S", "T", "U", "V", "W", "X", "Y", "Z", INCLUDING, DESIGNATED AS PRIVATE STREETS, FOR DOMESTIC WATER AND SANITARY SEWER PURPOSES, LOTS "A" AND "B" FOR OTHER LINE PURPOSES, 50 FOOT AND 30 FOOT WIDE, 25 FOOT WIDE, 10 FOOT WIDE, 5 FOOT WIDE, 2 FOOT WIDE, 1 FOOT WIDE, 6 INCH WIDE, 4 INCH WIDE, 3 INCH WIDE, 2 INCH WIDE, 1 INCH WIDE, 1/2 INCH WIDE, 1/4 INCH WIDE, 1/8 INCH WIDE, 1/16 INCH WIDE, 1/32 INCH WIDE, 1/64 INCH WIDE, 1/128 INCH WIDE, 1/256 INCH WIDE, 1/512 INCH WIDE, 1/1024 INCH WIDE, 1/2048 INCH WIDE, 1/4096 INCH WIDE, 1/8192 INCH WIDE, 1/16384 INCH WIDE, 1/32768 INCH WIDE, 1/65536 INCH WIDE, 1/131072 INCH WIDE, 1/262144 INCH WIDE, 1/524288 INCH WIDE, 1/1048576 INCH WIDE, 1/2097152 INCH WIDE, 1/4194304 INCH WIDE, 1/8388608 INCH WIDE, 1/16777216 INCH WIDE, 1/33554432 INCH WIDE, 1/67108864 INCH WIDE, 1/134217728 INCH WIDE, 1/268435456 INCH WIDE, 1/536870912 INCH WIDE, 1/1073741824 INCH WIDE, 1/2147483648 INCH WIDE, 1/4294967296 INCH WIDE, 1/8589934592 INCH WIDE, 1/17179869184 INCH WIDE, 1/34359738368 INCH WIDE, 1/68719476736 INCH WIDE, 1/137438953472 INCH WIDE, 1/274877906944 INCH WIDE, 1/549755813888 INCH WIDE, 1/1099511627776 INCH WIDE, 1/2199023255552 INCH WIDE, 1/4398046511104 INCH WIDE, 1/8796093022208 INCH WIDE, 1/17592186044416 INCH WIDE, 1/35184372088832 INCH WIDE, 1/70368744177664 INCH WIDE, 1/140737488355328 INCH WIDE, 1/281474976710656 INCH WIDE, 1/562949953421312 INCH WIDE, 1/1125899906842624 INCH WIDE, 1/2251799813685248 INCH WIDE, 1/4503599627370496 INCH WIDE, 1/9007199254740992 INCH WIDE, 1/18014398509481984 INCH WIDE, 1/36028797018963968 INCH WIDE, 1/72057594037927936 INCH WIDE, 1/144115188075855872 INCH WIDE, 1/288230376151711744 INCH WIDE, 1/576460752303423488 INCH WIDE, 1/1152921504606846976 INCH WIDE, 1/2305843009213693952 INCH WIDE, 1/4611686018427387904 INCH WIDE, 1/9223372036854775808 INCH WIDE, 1/18446744073709551616 INCH WIDE, 1/36893488147419103232 INCH WIDE, 1/73786976294838206464 INCH WIDE, 1/147573952589676412928 INCH WIDE, 1/295147905179352825856 INCH WIDE, 1/590295810358705651712 INCH WIDE, 1/1180591620717411303424 INCH WIDE, 1/2361183241434822606848 INCH WIDE, 1/4722366482869645213696 INCH WIDE, 1/9444732965739290427392 INCH WIDE, 1/18889465931478580854784 INCH WIDE, 1/37778931862957161709568 INCH WIDE, 1/75557863725914323419136 INCH WIDE, 1/151115727451828646838272 INCH WIDE, 1/302231454903657293676544 INCH WIDE, 1/604462909807314587353088 INCH WIDE, 1/1208925819614629174706176 INCH WIDE, 1/2417851639229258349412352 INCH WIDE, 1/4835703278458516698824704 INCH WIDE, 1/9671406556917033397649408 INCH WIDE, 1/19342813113834066795298816 INCH WIDE, 1/38685626227668133590597632 INCH WIDE, 1/77371252455336267181195264 INCH WIDE, 1/154742504910672534362390528 INCH WIDE, 1/309485009821345068724781056 INCH WIDE, 1/618970019642690137449562112 INCH WIDE, 1/1237940039285380274899124224 INCH WIDE, 1/2475880078570760549798248448 INCH WIDE, 1/4951760157141521099596496896 INCH WIDE, 1/9903520314283042199192993792 INCH WIDE, 1/19807040628566084398385987584 INCH WIDE, 1/39614081257132168796771975168 INCH WIDE, 1/79228162514264337593543950336 INCH WIDE, 1/158456325028528675187087900672 INCH WIDE, 1/316912650057057350374175801344 INCH WIDE, 1/633825300114114700748351602688 INCH WIDE, 1/1267650600228229401496703205376 INCH WIDE, 1/2535301200456458802993406410752 INCH WIDE, 1/5070602400912917605986812821504 INCH WIDE, 1/10141204801825835211973625643008 INCH WIDE, 1/20282409603651670423947251286016 INCH WIDE, 1/40564819207303340847894502572032 INCH WIDE, 1/81129638414606681695789005144064 INCH WIDE, 1/162259276829213363391778010288128 INCH WIDE, 1/324518553658426726783556020576256 INCH WIDE, 1/649037107316853453567112041152512 INCH WIDE, 1/1298074214633706907134224082305024 INCH WIDE, 1/2596148429267413814268448164610048 INCH WIDE, 1/5192296858534827628536896329220096 INCH WIDE, 1/10384593717069655257073792658440192 INCH WIDE, 1/20769187434139310514147585316880384 INCH WIDE, 1/41538374868278621028295170633760768 INCH WIDE, 1/83076749736557242056590341267521536 INCH WIDE, 1/166153499473114484113180682535043072 INCH WIDE, 1/332306998946228968226361365070086144 INCH WIDE, 1/664613997892457936452722730140172288 INCH WIDE, 1/1329227995784915872905445460280344576 INCH WIDE, 1/2658455991569831745810890920560689152 INCH WIDE, 1/5316911983139663491621781841121378304 INCH WIDE, 1/10633823966279326983243563682242756608 INCH WIDE, 1/21267647932558653966487127364485513216 INCH WIDE, 1/42535295865117307932974254728971026432 INCH WIDE, 1/85070591730234615865948509457942052864 INCH WIDE, 1/170141183460469231731897018915884105728 INCH WIDE, 1/340282366920938463463794037831768211456 INCH WIDE, 1/680564733841876926927588075663536422912 INCH WIDE, 1/1361129467683753853855176151327072845824 INCH WIDE, 1/2722258935367507707710352302654145691648 INCH WIDE, 1/5444517870735015415420704605308291383296 INCH WIDE, 1/10889035741470030830841409210616582766592 INCH WIDE, 1/21778071482940061661682818421233165533184 INCH WIDE, 1/43556142965880123323365636842466331066368 INCH WIDE, 1/87112285931760246646731273684932662132736 INCH WIDE, 1/174224571863520493293462547369853242665472 INCH WIDE, 1/348449143727040986586925094739706485330944 INCH WIDE, 1/696898287454081973173850189479412970661888 INCH WIDE, 1/1393796574908163946347700378958825941323776 INCH WIDE, 1/2787593149816327892695400757917651882647552 INCH WIDE, 1/5575186299632655785390801515835303765295104 INCH WIDE, 1/11150372599265311570781603031670607530590208 INCH WIDE, 1/22300745198530623141563206063341215061180416 INCH WIDE, 1/44601490397061246283126412126682430122360832 INCH WIDE, 1/89202980794122492566252824253364860244721664 INCH WIDE, 1/178405961588244985132505648506729720489443296 INCH WIDE, 1/356811923176489970265011297013459440978886592 INCH WIDE, 1/713623846352979940530022594026918881957773184 INCH WIDE, 1/1427247692705959881060045188053837763915546368 INCH WIDE, 1/2854495385411919762120090376107675527831092736 INCH WIDE, 1/5708990770823839524240180752215351055662185472 INCH WIDE, 1/11417981541647679048480361504430702111324370944 INCH WIDE, 1/22835963083295358096960723008861404222648741888 INCH WIDE, 1/45671926166590716193921446017722808445297483776 INCH WIDE, 1/91343852333181432387842892035445616890594967552 INCH WIDE, 1/182687704666362864775685784070891233781189935104 INCH WIDE, 1/365375409332725729551371568141782467562379870208 INCH WIDE, 1/730750818665451459102743136283564935124759740416 INCH WIDE, 1/1461501637330902918205486272567129870249519480832 INCH WIDE, 1/2923003274661805836410972545134259740499039361664 INCH WIDE, 1/5846006549323611672821945090268519480998078723328 INCH WIDE, 1/11692013098647223345643890180537038961996157446656 INCH WIDE, 1/23384026197294446691287780361074077923992314893312 INCH WIDE, 1/46768052394588893382575560722148154479984629786624 INCH WIDE, 1/93536104789177786765151121444296308959969259573248 INCH WIDE, 1/187072209578355573530302242888592617919938519146496 INCH WIDE, 1/374144419156711147060604485777185235839877038292992 INCH WIDE, 1/748288838313422294121208971554370471679754076585984 INCH WIDE, 1/1496577676626844588242417833108740943359508153171968 INCH WIDE, 1/2993155353253689176484835666217481886719016306343936 INCH WIDE, 1/5986310706507378352969671332434963773438032612687872 INCH WIDE, 1/11972621413014756705939342664869927546876065225375744 INCH WIDE, 1/23945242826029513411878685329739855093752130450751488 INCH WIDE, 1/47890485652059026823757370659479710187504260901502976 INCH WIDE, 1/95780971304118053647514741318959420375008521803005952 INCH WIDE, 1/191561942608236107295029482637918840750017043606011904 INCH WIDE, 1/383123885216472214590058965275837681500034087212023808 INCH WIDE, 1/766247770432944429180117930551675363000068174424047616 INCH WIDE, 1/1532495540865888858360235861103350726000136348848095232 INCH WIDE, 1/3064991081731777716720471722206701452000272697696190464 INCH WIDE, 1/6129982163463555433440943444413402904000545395392380928 INCH WIDE, 1/12259964326927110866881886888826805808001090790784761856 INCH WIDE, 1/24519928653854221733763773777653611616002181581569523712 INCH WIDE, 1/49039857307708443467527547555307223232004363163139047424 INCH WIDE, 1/98079714615416886935055095110614446464008726326278094848 INCH WIDE, 1/19615942922883377387011019022122889292801745265255618976 INCH WIDE, 1/39231885845766754774022038044245778585603490530511237952 INCH WIDE, 1/78463771691533509548044076088491557171206981061022475904 INCH WIDE, 1/156927543383067019096088152176983114342413962122044951808 INCH WIDE, 1/313855086766134038192176304353966228684827924244089903616 INCH WIDE, 1/627710173532268076384352608707932457369655848488179807232 INCH WIDE, 1/1255420347064536152768705217415864914739311696976359614464 INCH WIDE, 1/2510840694129072305537410434831729829478623393952719228928 INCH WIDE, 1/5021681388258144611074820869663459658957246787905438457856 INCH WIDE, 1/10043362776516289222149641739326919117914493575810876915712 INCH WIDE, 1/20086725553032578444299283478653838235828987151621753831424 INCH WIDE, 1/40173451106065156888598566957307676471657974303243507662848 INCH WIDE, 1/80346902212130313777197133914615352943315948606487015325696 INCH WIDE, 1/160693804424260675544394267829230705886631897212974030651392 INCH WIDE, 1/321387608848521351088788535658461411773263794425948061302784 INCH WIDE, 1/642775217697042702177577071316922823546527588851896012605568 INCH WIDE, 1/1285550435394085404355154142633845647093055177703792025211136 INCH WIDE, 1/2571100870788170808710308285267691294186110355407584050422272 INCH WIDE, 1/5142201741576341617420616570535382588372220710815168100844544 INCH WIDE, 1/10284403483152683234841233141070765176744441421630336201689088 INCH WIDE, 1/20568806966305366469682466282141530353488882843260672403378176 INCH WIDE, 1/41137613932610732939364932564283060706977765686521344806756352 INCH WIDE, 1/82275227865221465878729865128566121413955531373042689613512704 INCH WIDE, 1/164550457330442931757459730257132242827911062746085379227025408 INCH WIDE, 1/329100914660885863514919460514264485655822125492170758454050816 INCH WIDE, 1/658201829321771727029838921028528971311644250984341516908101632 INCH WIDE, 1/1316403658643543454059677842057057942623288501968683033816203264 INCH WIDE, 1/2632807317287086908119355684114115885246577003937366067632406528 INCH WIDE, 1/5265614634574173816238711368228231770493154007874732135264813056 INCH WIDE, 1/10531229269148347632477422736456435400986288015749464270528126112 INCH WIDE, 1/21062458538296695264954845472912870801972576031498928541056252224 INCH WIDE, 1/42124917076593390529909690945825741603945152062997857102112504448 INCH WIDE, 1/84249834153186781059819381891651483207890304125995714204225008896 INCH WIDE, 1/168499668306373562119638763783302966415780608251991428408450017792 INCH WIDE, 1/336999336612747124239277527566605932831561216503982856816900035584 INCH WIDE, 1/673998673225494248478555055133211865663122433007965713633800071168 INCH WIDE, 1/134799734645098849695711011026643733132624486601593142726760014336 INCH WIDE, 1/269599469290197699391422022053287466265248973203186285453520028672 INCH WIDE, 1/539198938580395398782844044106574932530497946406372570907040057344 INCH WIDE, 1/1078397877160790797565688088213149865060995892812745141814080114688 INCH WIDE, 1/2156795754321581595131376176426299730121991785625490283628160229376 INCH WIDE, 1/4313591508643163190262752352852599460243983571250980567256320458752 INCH WIDE, 1/8627183017286326380525504705705198920487967142501961134512640917504 INCH WIDE, 1/17254366034572652761051009411410397840975934285003922270025281835008 INCH WIDE, 1/34508732069145305522102018822820795681951868570007844540050563670016 INCH WIDE, 1/69017464138290611044204037645641591363903737140015689080101127340032 INCH WIDE, 1/138034928276581222088408075291283182727807474280031378160202254680064 INCH WIDE, 1/276069856553162444176816150582566365455614948560062756320404509360128 INCH WIDE, 1/552139713106324888353632301165132730911229897120125512640809018720256 INCH WIDE, 1/1104279426212649776707264602330265461822459794240251025216018037440512 INCH WIDE, 1/2208558852425299553414529204660530923644919588480502050432036074881024 INCH WIDE, 1/4417117704850599106829058409321061847289839176961004100864072149762048 INCH WIDE, 1/8834235409701198213658116818642123694579678353922008201728144299524096 INCH WIDE, 1/17668470819402396427316233637284247389159356707844016403456288599048192 INCH WIDE, 1/35336941638804792854632467274568494778318713415688032806912577198096384 INCH WIDE, 1/70673883277609585709264934549136989556637426831376065613825154396192768 INCH WIDE, 1/141347766555219171418529869098273979113274853662752131227650308792385536 INCH WIDE, 1/282695533110438342837059738196547958226549707325504262455300617584771072 INCH WIDE, 1/565391066220876685674119476393095916453099414651008524910601235169542144 INCH WIDE, 1/1130782132441753371348238952786191832906198829302017049821202470339084288 INCH WIDE, 1/2261564264883506742696477905572383665812397658604034099642404940678168576 INCH WIDE, 1/4523128529767013485392955811144767331624795317208068199284809881356337152 INCH WIDE, 1/9046257059534026970785911622289534663249590634416136398569619762712674304 INCH WIDE, 1/1809251411906805394157182324457906932649918126883227279713923952542534860



*Amended Tract Map No. 31774*

\* ALSO BEING A SUBDIVISION OF TRACT MAP NO. 31774, AS SHOWN BY MAP BOOK 386 PAGES 43 THROUGH 50, RECORDS OF RIVERSIDE COUNTY, CALIFORNIA.

```

TRACT NO. 31774 CONTAINS 68.83 ACRES, GROSS.
TRACT NO. 31774 CONTAINS 285 LOTS AND 31 LETTERED LOTS "A" THROUGH "EE".
( ) INDICATES RECORD DATA PER PARCEL MAP NO. 8471, P.M.B. 31/19.
[ ] INDICATES RECORD DATA PER TRACT MAP NO. 18355-1, 144/1-8.
< > INDICATES RECORD DATA PER TRACT MAP NO. 29139, P.M.B. 310/64-67.
{ } INDICATES RECORD DATA PER RECORD OF SURVEY 77/68.
(( )) INDICATES RECORD DATA PER TRACT MAP BOOK 34/3-4.
* * INDICATES RECORD DATA PER PARCEL MAP NO. 28294, P.M.B. 185/64-65.
△ INDICATES A 26' EASEMENT FOR PUBLIC UTILITY AND PEDESTRIAN ACCESS PURPOSES OFFERED HEREON.
△ INDICATES A 26' EASEMENT FOR SEWER LINE PURPOSES OFFERED HEREON.
△ INDICATES 10' EASEMENT FOR PUBLIC UTILITY PURPOSES OFFERED HEREON.
△ INDICATES A 20' EASEMENT FOR WATER LINE PURPOSES OFFERED HEREON.
△ INDICATES A 20' EASEMENT FOR EMERGENCY ACCESS PURPOSES OFFERED HEREON.
P.U.E. INDICATES PUBLIC UTILITY EASEMENT
BUILDING SETBACKS SHALL CONFORM TO EXISTING ZONING REGULATIONS.

```

○ INDICATES SET 1" IRON PIPE, FLUSH, WITH PLASTIC PLUG STAMPED "PLS 6500" IN DIRT AREAS OR SET LEAD AND TAG STAMPED "PLS 6500" IN CONCRETE AREAS AND TOP OF WALLS OR SET COPPERWELD MONUMENT STAMPED "PLS 6500" IN ASPHALT AREAS.

MONUMENTS TO BE SET AT REAR LOT CORNERS, REAR AND SIDE LOT LINE ANGLE POINTS AND ENDS OF CURVES. THE PROLONGATION OF THE SIDE LOT LINES AT THE TOP OF CURB AS DESCRIBED ABOVE.

ALL MONUMENTS SHOWN AS "SET" SHALL BE SET UPON SUBSTANTIAL COMPLETION OF PROPOSED IMPROVEMENTS OR WITHIN ONE YEAR FROM THE TIME OF RECORDATION OF THIS MAP IN ACCORDANCE WITH THE TERMS OF THE MONUMENTATION AGREEMENT FOR THIS MAP, UNLESS OTHERWISE NOTED.

THE BEARINGS SHOWN HEREON ARE BASED ON THE CENTERLINE OF RAMON ROAD AS SHOWN ON PARCEL MAP NO. 8471, P.M.B. 31/19 BEING "NORTH 89°59'32" EAST".

AREA TABLE		CROSS-SECTIONAL AREA					
AREA	AREA	AREA	AREA	AREA	AREA	AREA	AREA
161	5,952 SF	208	3,953 SF	255	3,742 SF	30	2,023 SF
162	7,373 SF	209	3,953 SF	256	3,791 SF	R	2,081 SF
163	6,976 SF	210	3,953 SF	257	3,752 SF	S	13,025 SF
164	11,000 SF	211	3,953 SF	258	3,791 SF	T	13,250 SF
165	5,900 SF	212	3,953 SF	259	4,060 SF	U	10,850 SF
166	5,900 SF	213	3,953 SF	260	4,060 SF	V	13,250 SF
167	7,037 SF	214	3,953 SF	261	3,752 SF	W	10,850 SF
168	7,225 SF	215	3,953 SF	262	3,752 SF	X	5,251 SF
169	5,928 SF	216	3,953 SF	263	3,752 SF	Y	16,394 SF
170	5,928 SF	217	3,953 SF	264	3,796 SF	Z	43,247 SF
171	5,928 SF	218	4,278 SF	265	3,785 SF	AA	14,212 SF
172	1,163 SF	219	3,802 SF	266	3,785 SF	BB	21,446 SF
173	7,163 SF	220	3,802 SF	267	4,096 SF	CC	3,696 SF
174	5,928 SF	221	3,802 SF	268	4,096 SF	DD	104,614 SF
175	5,928 SF	222	3,802 SF	269	3,785 SF	EE	50,336 SF
176	5,928 SF	223	4,062 SF	270	3,785 SF		
177	7,225 SF	224	4,355 SF	271	3,955 SF		
178	7,037 SF	225	4,355 SF	272	3,910 SF		
179	5,900 SF	226	4,355 SF	273	3,860 SF		
180	5,900 SF	227	4,006 SF	274	3,860 SF		
181	5,900 SF	228	4,006 SF	275	3,912 SF		
182	6,976 SF	229	5,574 SF	276	3,860 SF		
183	7,585 SF	230	3,645 SF	277	4,034 SF		
184	6,120 SF	231	3,802 SF	278	4,524 SF		
185	6,120 SF	232	3,802 SF	279	3,860 SF		
186	7,130 SF	233	3,802 SF	280	4,034 SF		
187	7,330 SF	234	3,819 SF	281	3,860 SF		
188	6,120 SF	235	3,819 SF	282	3,912 SF		
189	6,120 SF	236	3,819 SF	283	3,886 SF		
190	7,585 SF	237	3,462 SF	284	3,860 SF		
191	7,373 SF	238	3,469 SF	285	3,910 SF		
192	5,952 SF	239	3,765 SF	A	26,741 SF		
193	5,952 SF	240	3,757 SF	B	11,862 SF		
194	7,373 SF	241	3,780 SF	C	14,691 SF		
195	7,230 SF	242	3,780 SF	D	30,256 SF		
196	5,736 SF	243	3,953 SF	E	17,712 SF		
197	5,736 SF	244	3,953 SF	F	81,756 SF		
198	7,230 SF	245	3,867 SF	G	49,782 SF		
199	7,230 SF	246	3,743 SF	H	8,384 SF		
200	5,736 SF	247	3,752 SF	I	84,695 SF		
201	5,736 SF	248	4,648 SF	J	86,049 SF		
202	7,230 SF	249	4,731 SF	K	84,691 SF		
203	7,373 SF	250	3,819 SF	L	68,214 SF		
204	5,952 SF	251	3,690 SF	M	22,937 SF		
205	5,952 SF	252	3,757 SF	N	21,175 SF		
206	7,373 SF	253	3,886 SF	P	30,256 SF		
207	4,278 SF	254	3,886 SF	P	21,276 SF		



SEE SHEET TWO FOR SURVEYOR'S  
NOTES, BASIS OF BEARING AND  
MONUMENTATION

IN THE CITY OF CATHEDRAL CITY, COUNTY OF RIVERSIDE, STATE OF CALIFORNIA

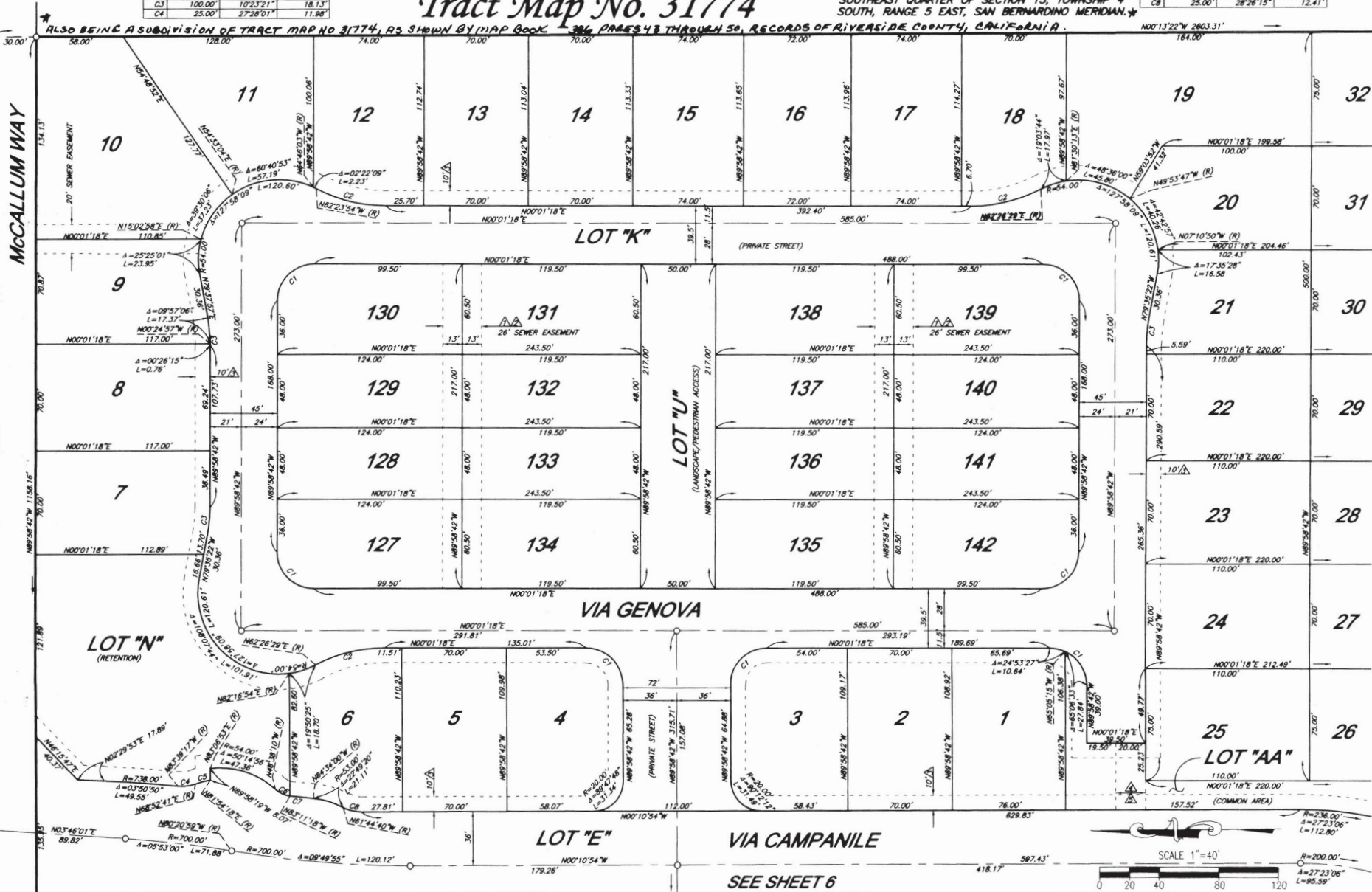
BEING A SUBDIVISION OF PARCEL 1 OF PARCEL  
MAP NO. 8471 AS SHOWN ON MAP BOOK 31 OF  
PARCEL MAPS, PAGE 19 AND THE WESTERLY 34  
ACRES EXCEPTING THE WEST 10 ACRES OF THE  
SOUTHEAST QUARTER OF SECTION 15, TOWNSHIP 4  
SOUTH, RANGE 5 EAST, SAN BERNARDINO MERIDIAN.

CITY

NO.	ANGLE	DELTA	ARC
C1	46.00'	1301.56"	10.48'
C6	17.00'	36.3308"	10.85'
C7	658.00'	0122.42"	15.83'
C8	25.00'	28.2615"	12.41'

# Amended Tract Map No. 31774

ALSO BEING A SUBDIVISION OF TRACT MAP NO. 31774, AS SHOWN BY MAP BOOK 31, PAGES 48 THROUGH 50, RECORDS OF RIVERSIDE COUNTY, CALIFORNIA.



SEE SHEET 4

SEE SHEET 6



SEE SHEET TWO FOR SURVEYOR'S  
NOTES, BASIS OF BEARING AND  
MONUMENTATION

CURVE DATA	NO.	RADIUS	CHORD	ARC
C1	24.50	9070.00'	38.48'	
C2	100.00	2734.49'	48.14'	
C3	100.00	1023.30'	18.13'	
C4	9.50	9070.00'	14.92'	

IN THE CITY OF CATHEDRAL CITY, COUNTY OF RIVERSIDE, STATE OF CALIFORNIA

# Amended Tract Map No. 31774

ALSO BEING A SUBDIVISION OF TRACT MAP NO. 31774, AS SHOWN BY MAP  
BOOK 386 PAGES 43 THROUGH 50, RECORDS OF RIVERSIDE COUNTY,  
CALIFORNIA

BEING A SUBDIVISION OF PARCEL 1 OF PARCEL MAP  
NO. 8471 AS SHOWN ON MAP BOOK 31 OF PARCEL  
MAPS, PAGE 19 AND THE WESTERLY 34 ACRES  
EXCEPTING THE WEST 10 ACRES OF THE SOUTHEAST  
QUARTER OF SECTION 15, TOWNSHIP 4 SOUTH, RANGE  
5 EAST, SAN BERNARDINO MERIDIAN. \*

SHEET 5 OF 9 SHEETS

SCALE 1"=40'



SEE SHEET TWO FOR SURVEYOR'S  
NOTES, BASIS OF BEARING AND  
MONUMENTATION

IN THE CITY OF CATHEDRAL CITY, COUNTY OF RIVERSIDE, STATE OF CALIFORNIA

# Amended Tract Map No. 31774

BEING A SUBDIVISION OF PARCEL 1 OF PARCEL MAP NO. 8471 AS SHOWN ON MAP  
BOOK 31 OF PARCEL MAPS, PAGE 19 AND THE WESTERLY 34 ACRES EXCEPTING THE  
WEST 10 ACRES OF THE SOUTHEAST QUARTER OF SECTION 15, TOWNSHIP 4 SOUTH,  
RANGE 5 EAST, SAN BERNARDINO MERIDIAN.  
ALSO BEING A SUBDIVISION OF TRACT MAP NO. 31774 AS SHOWN BY  
MAP BOOK 386 PAGES 43 THROUGH 50, RECORDS OF RIVERSIDE  
COUNTY, CALIFORNIA.

SHEET 6 OF 9 SHEETS





SEE SHEET TWO FOR SURVEYOR'S NOTES, BASIS OF BEARING AND MONUMENTATION

IN THE CITY OF CATHEDRAL CITY, COUNTY OF RIVERSIDE, STATE OF CALIFORNIA

**Tract Map No. 31774**

**AMENDED**

**Tract Map No. 31774**

BEING A SUBDIVISION OF PARCEL 1 OF PARCEL MAP NO. 8471 AS SHOWN ON MAP BOOK 31 OF PARCEL MAPS, PAGE 19 AND THE WESTERLY 34 ACRES EXCEPTING THE WEST 10 ACRES OF THE SOUTHEAST QUARTER OF SECTION 15, TOWNSHIP 4 SOUTH, RANGE 5 EAST, SAN BERNARDINO MERIDIAN, ALSO BEING A SUBDIVISION OF TRACT MAP NO. 31774 AS SHOWN BY MAP BOOK 284, PAGES 43 THROUGH 50, RECORDS OF GREAT AVENUE COUNTY, CALIFORNIA.

SHEET 7 OF 9 SHEETS

SCALE 1"=40'

**LOT "BB"** A=27'33"00"  
L=76'30"00"

**CURVE DATA (CONCRETE AREA)**

NO.	BEARING	DELTA	ARC
C1	N 45° E	90°	18.00
C2	N 60° E	27° 33' 00"	48.14
C3	N 60° E	162° 32' 00"	18.13
C4	N 60° E	81° 33' 00"	18.00
C5	S 60° E	27° 19' 00"	32.73
C6	S 60° E	27° 19' 00"	7.82



← SEE SHEET

399





**SEE SHEET 5**

399

