

MATERIAL LEGEND:

- NOTE: KEYED NOTES BELOW APPLY TO MULTIPLE SHEETS AND MAY NOT BE APPLICABLE TO THIS SHEET
- ① INSULATED METAL PANEL - MBCI, COLOR: ALMOND
 - ② METAL COPING - MBCI, COLOR: KOKO BROWN
 - ③ METAL CANOPY - MBCI, COLOR: KOKO BROWN
 - ④ STONE VENEER
 - ⑤ HORIZONTAL METAL PANEL - COLOR MATCH TO: BENJAMIN MOORE #2175-30 - RUST
 - ⑥ EIFS - STO MEDIUM SAND FINISH, COLOR: DESERT SUN
 - ⑦ METAL PANEL BAND - MBCI, COLOR: KOKO BROWN
 - ⑧ LOADING DOOR - MBCI, COLOR: ALMOND
 - ⑨ DISPLAY WINDOW SYSTEM
 - ⑩ PERFORATED METAL PANEL - COLOR MATCH TO: BENJAMIN MOORE #2175-30 - RUST
 - ⑪ EIFS - STO FINE SAND FINISH, COLOR: MOCHA CREAM



444 N MICHIGAN AVE
SUITE 1850
CHICAGO, IL 60611
Ph 312.988.7412
Fx 312.988.7409
www.sgwarch.com
PROFESSIONAL DESIGN FIRM
License Number: 184-001505
Expiration Date: April 30, 2023



44-600 VILLAGE COURT
SUITE 100
PALM DESERT, CA 92260
Ph 760.346.4750
Fx 760.340.0089



41877 ENTERPRISE CIRCLE NORTH
SUITE 140
TEMECULA, CA 92590
Ph 951.296.3430

COPYRIGHT 2023: SULLIVAN GOULETTE & WILSON, LTD.
EXPRESSLY RESERVES ITS COMMON LAW COPYRIGHT AND OTHER PROPERTY RIGHTS IN THESE PLANS. THESE PLANS ARE NOT TO BE REPRODUCED, CHANGED OR COPIED IN ANY FORM OR MANNER WHATSOEVER, NOR ARE THEY TO BE ASSIGNED TO ANY THIRD PARTY, WITHOUT FIRST OBTAINING THE EXPRESSED WRITTEN PERMISSION AND CONSENT OF SULLIVAN GOULETTE & WILSON, LTD.
THESE DRAWINGS MAY HAVE BEEN REPRODUCED AT A SIZE DIFFERENTLY THAN ORIGINALLY DRAWN. OWNER AND ARCHITECT ASSUME NO RESPONSIBILITY FOR USE OF INCORRECT SCALE.
CONTRACTOR SHALL VERIFY ALL EXISTING CONDITIONS PRIOR TO PROCEEDING WITH CONSTRUCTION AND NOTIFY ARCHITECT IMMEDIATELY OF ANY DISCREPANCIES OR CONFLICTS.

PRINCIPAL: MS P.M.: CP
QC BY: DRAWN BY: BW, AB

2	03/28/24	PUD REVIEW
1	07/12/23	ISSUE FOR OWNER REVIEW
NO	DATE	ISSUE DESCRIPTION

DATE PALM & ROSEMONT

CATHEDRAL CITY, CA 92234

MATERIAL BOARD

A2-04



⑨ KAWNEER STOREFRONT SYSTEM
SCALE: NTS



⑥ JANUS LOADING DOOR
SCALE: NTS



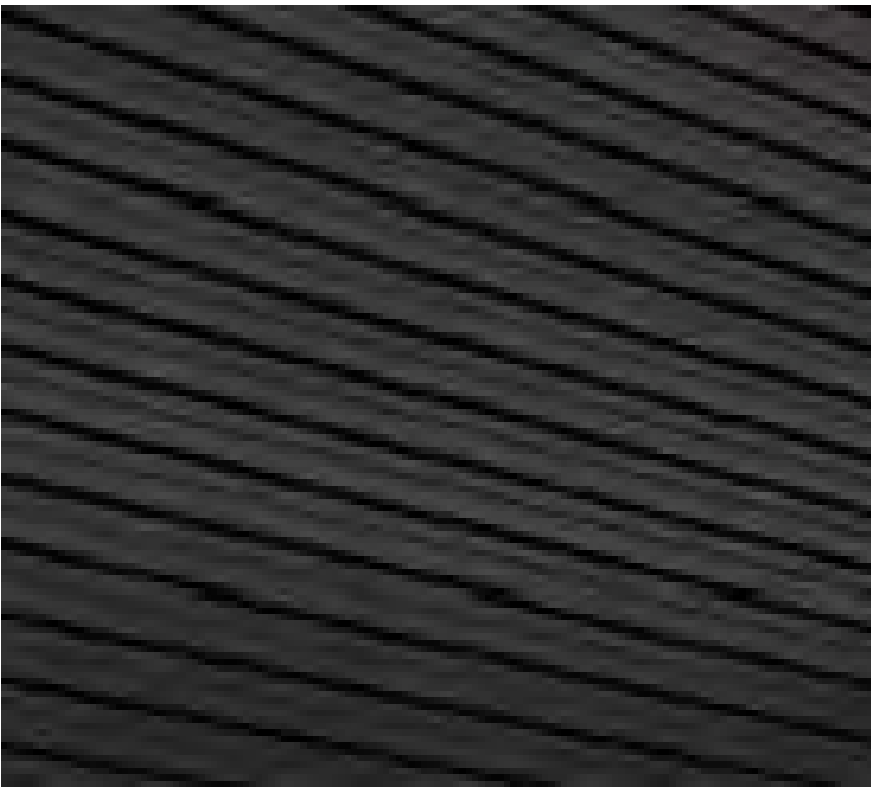
③ METAL CANOPY
SCALE: NTS



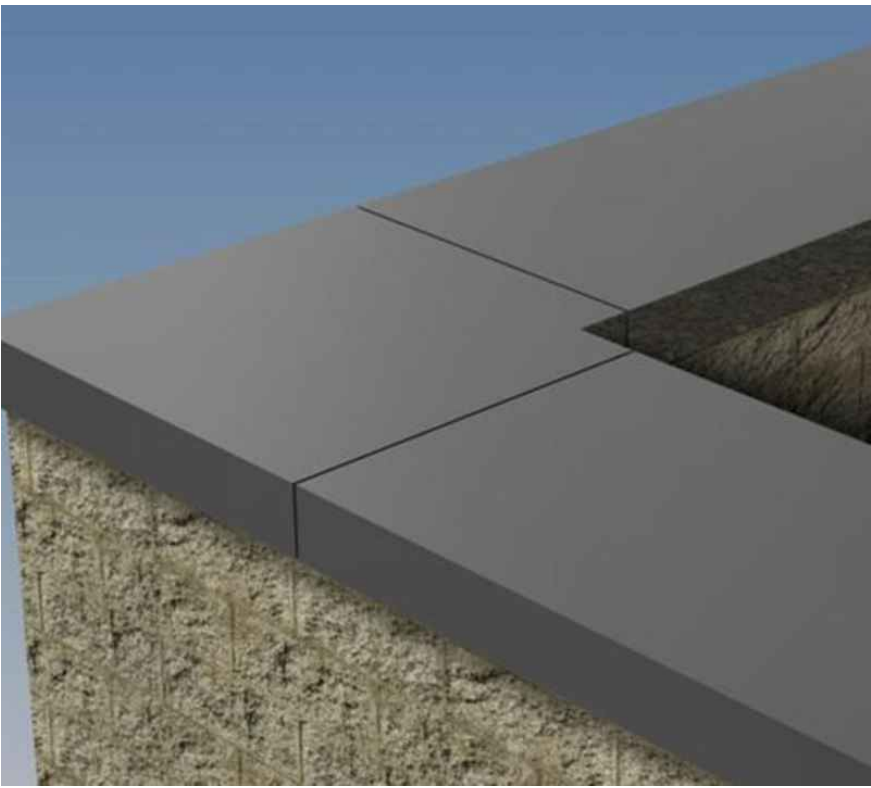
⑪ EIFS - MEDIUM SAND FINISH
SCALE: NTS



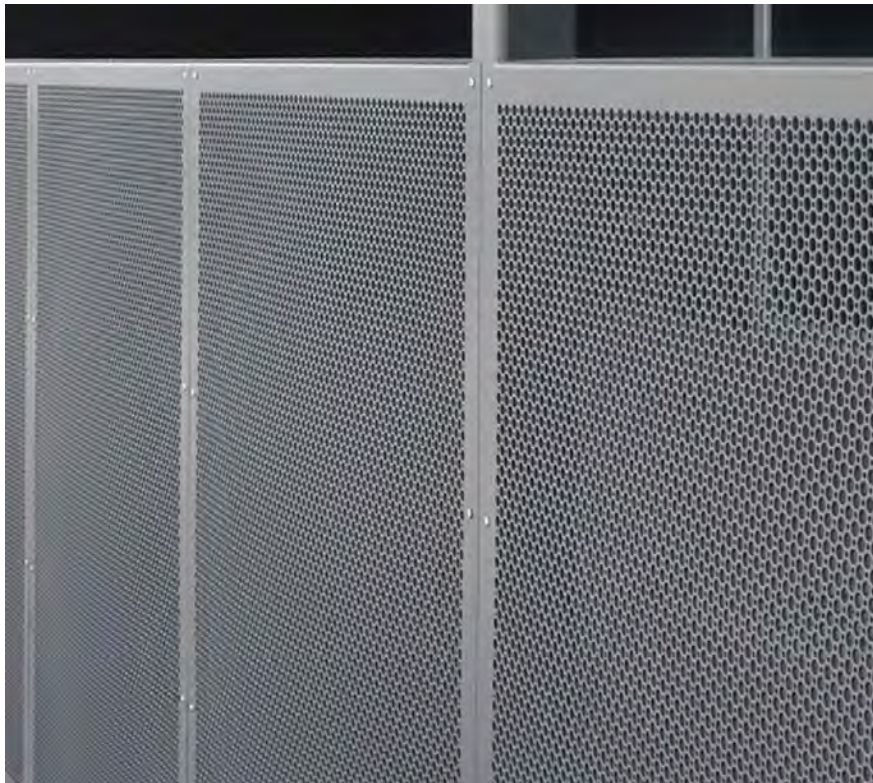
⑧ EIFS - FINE SAND FINISH
SCALE: NTS



⑤ HORIZONTAL CORRUGATED METAL PANEL
SCALE: NTS



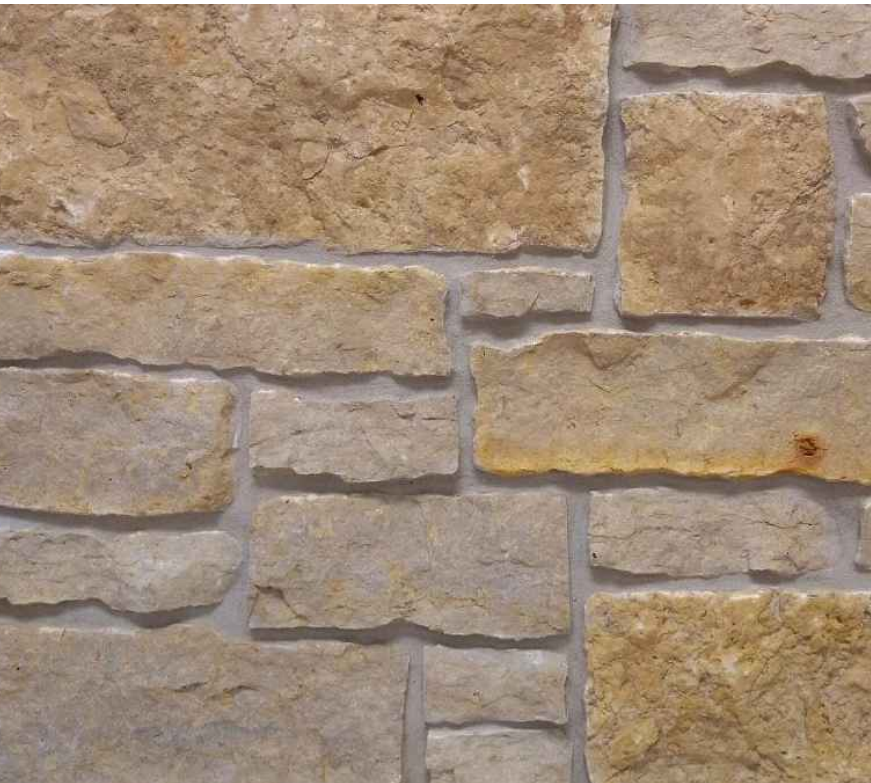
② METAL COPING
SCALE: NTS



⑩ PERFORATED METAL PANEL
SCALE: NTS



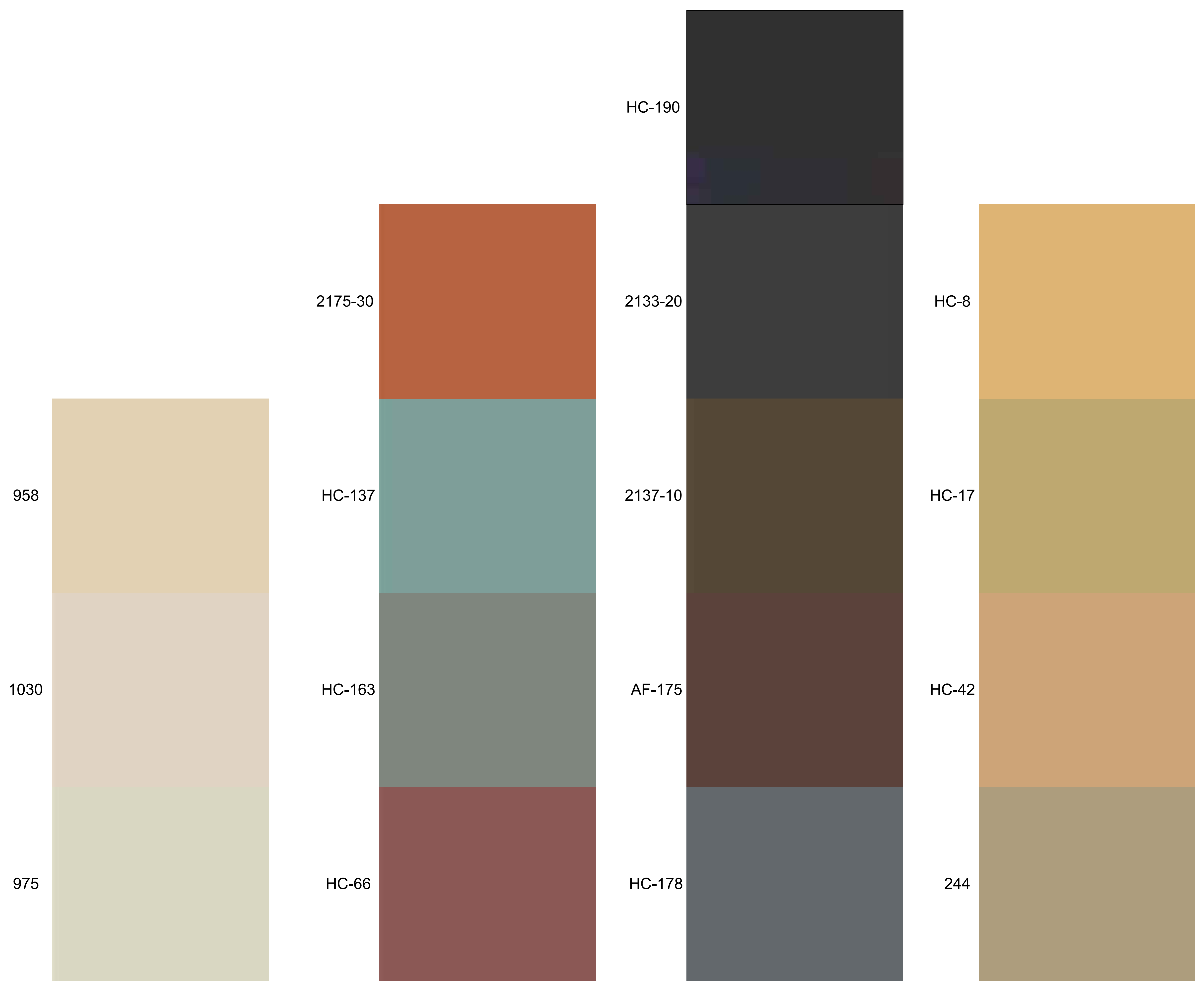
⑦ METAL PANEL BAND
SCALE: NTS



④ STONE VENEER WALL
SCALE: NTS



① TEXTURED METAL PANEL
SCALE: NTS



3 NEUTRALS
SCALE: NTS

4 ACCENT COLORS
SCALE: NTS

4 DARK COLORS
SCALE: NTS

1 COMMERCIAL BASE
SCALE: NTS

444 N MICHIGAN AVE
SUITE 1850
CHICAGO, IL 60611
Ph 312.988.7412
Fx 312.988.7409
www.sgwarch.com

PROFESSIONAL DESIGN FIRM
License Number: 184-001505
Expiration Date: April 30, 2023

44-600 VILLAGE COURT
SUITE 100
PALM DESERT, CA 92260
Ph 760.346.4750
Fx 760.340.0089

41877 ENTERPRISE CIRCLE NORTH
SUITE 140
TEMECULA, CA 92590
Ph 951.296.3430

COPYRIGHT 2023 SULLIVAN GOULETTE & WILSON, LTD.
EXPRESSLY RESERVES ITS COMMON LAW COPYRIGHT AND
OTHER PROPERTY RIGHTS IN THESE PLANS. THESE PLANS
ARE NOT TO BE REPRODUCED, CHANGED OR COPIED IN ANY
FORM OR MANNER WHATSOEVER, NOR ARE THEY TO BE
ASSIGNED TO ANY THIRD PARTY, WITHOUT FIRST OBTAINING
THE EXPRESSED WRITTEN PERMISSION AND CONSENT OF
SULLIVAN GOULETTE & WILSON, LTD.

THESE DRAWINGS MAY HAVE BEEN REPRODUCED AT A SIZE
DIFFERENTLY THAN ORIGINALLY DRAWN. OWNER AND
ARCHITECT ASSUME NO RESPONSIBILITY FOR USE OF
INCORRECT SCALE.

CONTRACTOR SHALL VERIFY ALL EXISTING CONDITIONS PRIOR
TO PROCEEDING WITH CONSTRUCTION AND NOTIFY
ARCHITECT IMMEDIATELY OF ANY DISCREPANCIES OR
CONFLICTS.

PRINCIPAL: MS		P.M.: CP
QC BY:		DRAWN BY: BW, AB

2	03/28/24	PUD REVIEW
1	07/12/23	ISSUE FOR OWNER REVIEW
NO	DATE	ISSUE DESCRIPTION

DATE PALM & ROSEMONT

CATHEDRAL CITY, CA 92234

COLOR OPTIONS

A2-05