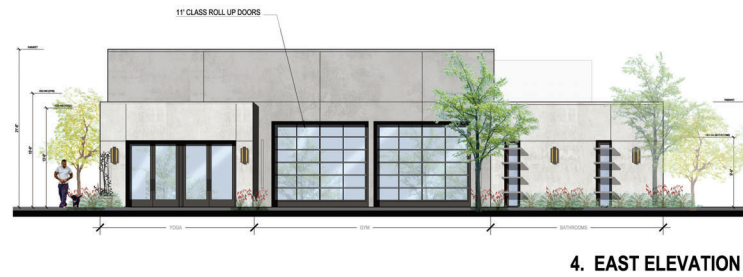
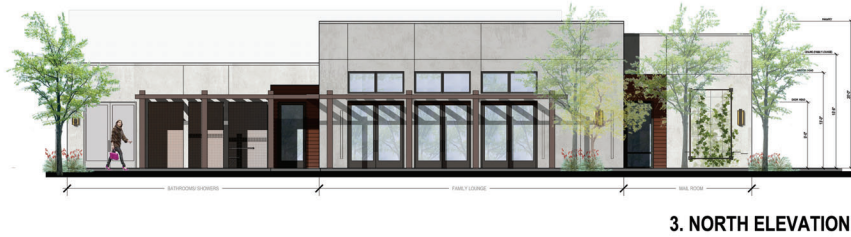


PROJECT: **THE WREN**
ROSEMOUNT AVE., CATHEDRAL CITY, APN 670-110-043
HPA PROJECT# 2023158 PLANNING # 23-001

ARCHITECT: VELY ZAJEC, vely@humphreys.com, 949.468.5866
HUMPHREYS & PARTNERS ARCHITECTS, L.P.
5339 Alpha Rd., Suite 300, Dallas, TX 75240 | 972.701.9636 | www.humphreys.com

OWNER: STEFAN VOGEL, stefan@buildboys2.com, 626.277.6782
COACHELLA VALLEY COMMUNITY DEVELOPMENT GROUP
36101 BOB HOPE DRIVE, SUITE E5, RANCHO MIRAGE, CA 92270



0' 8' 16' 32'

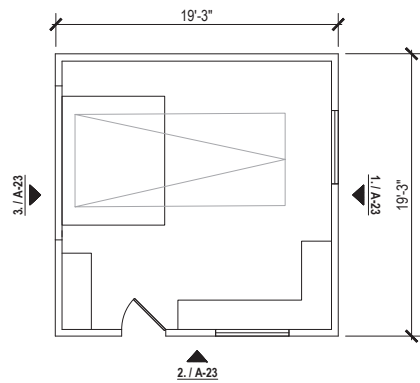
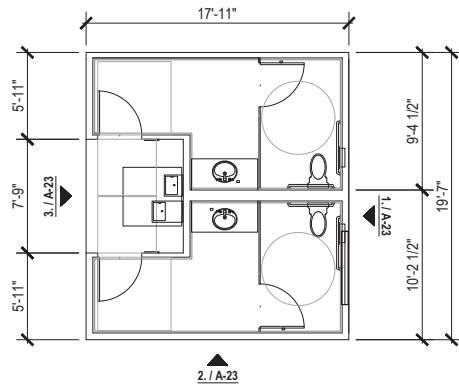
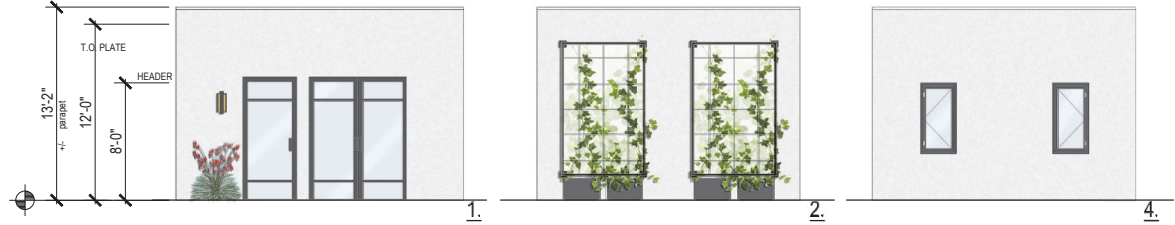
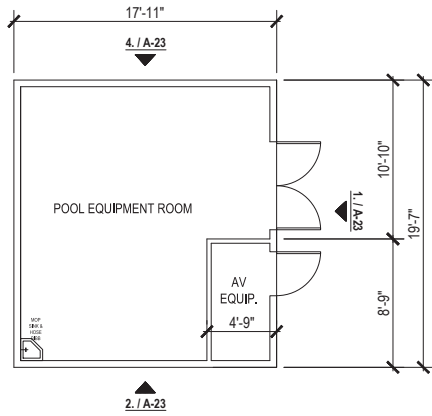
SCALE $\frac{1}{8}" = 1'-0"$ (ON 24 x 36 SHEET)

PROJECT: **THE WREN**
ROSEMOUNT AVE., CATHEDRAL CITY, APN 670-110-043
HPA PROJECT# 2023158 PLANNING # 23-001

ARCHITECT: VELY ZAJEC, vely@humphreys.com, 949.468.5866
HUMPHREYS & PARTNERS ARCHITECTS, L.P.
5339 Alpha Rd., Suite 300, Dallas, TX 75240 | 972.701.9636 | www.humphreys.com

OWNER: STEFAN VOGEL, stefan@buildbys2.com, 626.277.6782
COACHELLA VALLEY COMMUNITY DEVELOPMENT GROUP
36101 BOB HOPE DRIVE, SUITE E5, RANCHO MIRAGE, CA 92270

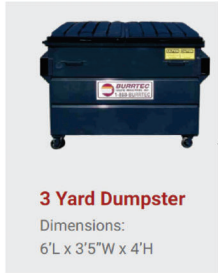
© 2023 by HUMPHREYS & PARTNERS ARCHITECTS, L.P. The arrangements depicted herein are the sole property of Humphreys & Partners Architects, L.P. and may not be reproduced in any form without its written permission. Architectural conceptual site plans are for feasibility purpose only. Decisions may occur due to further investigation from regulatory authorities and building code analysis. Dimensions shown are of a strategic intent only. Refer to surveys and civil drawings for technical information and measurements.



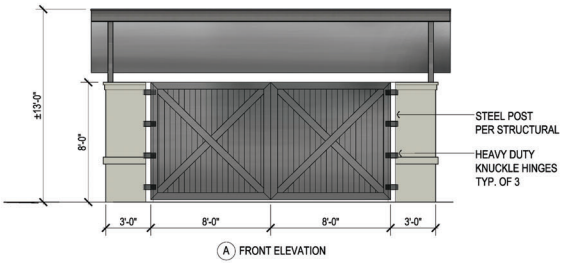
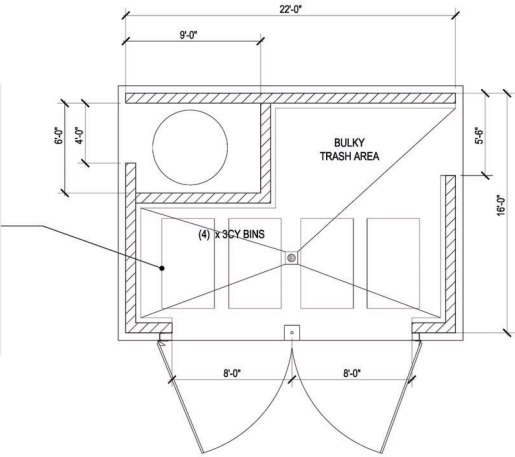
PROJECT: **THE WREN**
ROSEMOUNT AVE., CATHEDRAL CITY, APN 670-110-043
HPA PROJECT# 2023158 PLANNING # 23-001

ARCHITECT: VELY ZAJEC, vely@humphreys.com, 949.468.5866
HUMPHREYS & PARTNERS ARCHITECTS, L.P.
5339 Alpha Rd., Suite 300, Dallas, TX 75240 | 972.701.9636 | www.humphreys.com

OWNER: STEFAN VOGEL, stefan@buildboys2.com, 626.277.6782
COACHELLA VALLEY COMMUNITY DEVELOPMENT GROUP
36101 BOB HOPE DRIVE, SUITE E5, RANCHO MIRAGE, CA 92270



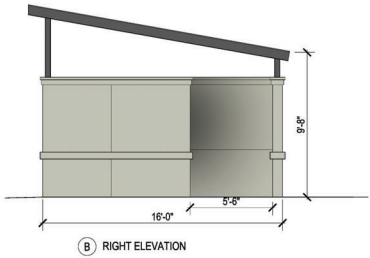
BY BURRTEC



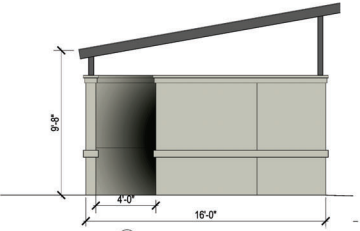
(A) FRONT ELEVATION



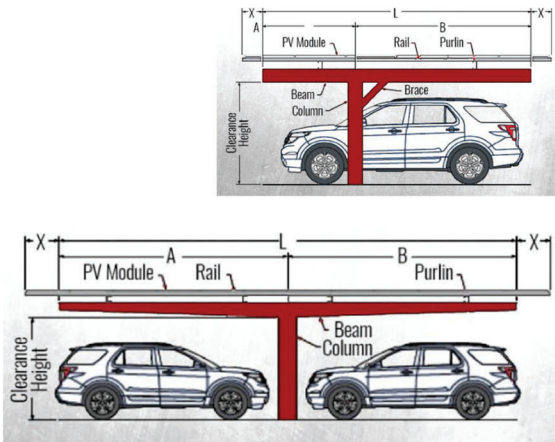
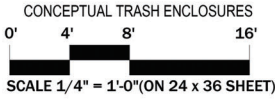
(C) REAR ELEVATION



(B) RIGHT ELEVATION



(D) LEFT ELEVATION



TYPICAL SOLAR CARPORTS BY BAJA

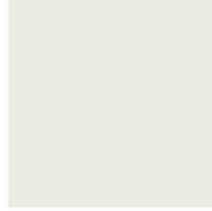
PROJECT: **THE WREN**
ROSEMOUNT AVE., CATHEDRAL CITY, APN 670-110-043
HPA PROJECT# 2023158 PLANNING # 23-001

ARCHITECT: VELY ZAJEC, vely@humphreys.com, 949.468.5866
HUMPHREYS & PARTNERS ARCHITECTS, L.P.
5339 Alpha Rd., Suite 300, Dallas, TX 75240 | 972.701.9636 | www.humphreys.com

OWNER: STEFAN VOGEL, stefan@buildbys2.com, 626.277.6782
COACHELLA VALLEY COMMUNITY DEVELOPMENT GROUP
36101 BOB HOPE DRIVE, SUITE E5, RANCHO MIRAGE, CA 92270



7 - METAL ROOF BY ATAS (DEC797 BATTLESHIP GRAY)



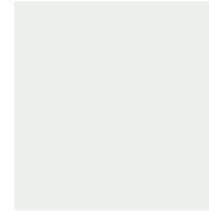
1.A - STUCCO (DE6281 - SHADOW WHITE)



1.C - STUCCO (DE6276 - SILHOUETTE)



3.A - METAL RAILING (DEA002 - BLACK)
3.B - METAL AWNING (DEA002 - BLACK)



1.B - STUCCO (DEW381 - DROPLETS)



11 - WOOD TRELLIS AT CLUB HOUSE DECK



3.A - METAL RAILING (DEA002 - BLACK)
3.B - METAL AWNING (DEA002 - BLACK)



TYPICAL BALCONY RAIL



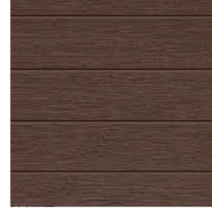
2 - ALUM. WINDOWS
(STANDARD BRONZE FINISH)



4.A - ACCENT PANELS
(DE6307 - ARTISTIC STONE)



5.A - DOORS (DE6063, BLACK WALNUT)



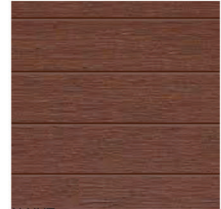
6.A - RESYSTA SIDING
(COLOR: C71, PALISANDER)



4.B - ACCENT PANELS
(DE5809 - RAGING TIDE)



5.B - DOORS (DE6014 - DARK CHOCOLATE)



6.B - RESYSTA SIDING
(COLOR: C51, WALNUT)



1.A - STUCCO (DE6281 - SHADOW WHITE)
1.B - STUCCO (DEW381 - DROPLETS)
1.C - STUCCO (DE6276 - SILHOUETTE)
2 - ALUM. WINDOWS (STANDARD BRONZE FINISH)
3.A - METAL RAILING (DEA002 - BLACK)
3.B - METAL AWNING (DEA002 - BLACK)
4.A - ACCENT PANELS (DE6307 - ARTISTIC STONE)
5.A - DOORS (DE6063, BLACK WALNUT)

5.B - DOORS (DE6014 - DARK CHOCOLATE)
6.A - RESYSTA SIDING (COLOR: C71, PALISANDER)
6.B - RESYSTA SIDING (COLOR: C51, WALNUT)
7 - METAL ROOF BY ATAS (DEC797 BATTLESHIP GRAY)
8 - TYPICAL SIGNAGE FOR ALL PRIVATE-ENTRY UNITS
9 - BUILDING SIGNAGE
10 - VERTICAL TRELLIS
11 - WOOD TRELLIS

PROJECT: **THE WREN**
ROSEMOUNT AVE., CATHEDRAL CITY, APN 670-110-043
HPA PROJECT# 2023158 PLANNING # 23-001

ARCHITECT: VELY ZAJEC, vely@humphreys.com, 949.468.5866
HUMPHREYS & PARTNERS ARCHITECTS, L.P.
5339 Alpha Rd., Suite 300, Dallas, TX 75240 | 972.701.9636 | www.humphreys.com

OWNER: STEFAN VOGEL, stefan@buildbys2.com, 626.277.6782
COACHELLA VALLEY COMMUNITY DEVELOPMENT GROUP
36101 BOB HOPE DRIVE, SUITE E5, RANCHO MIRAGE, CA 92270