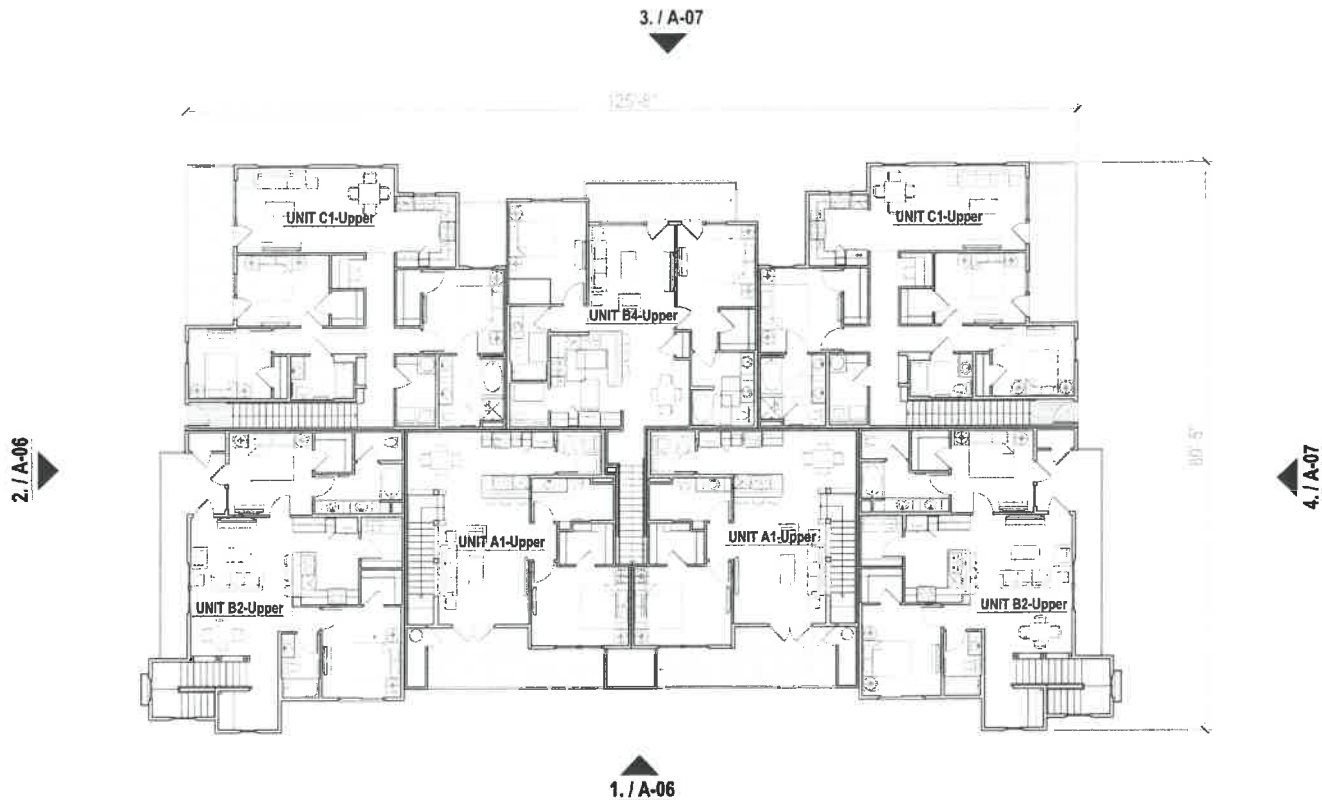




SCALE  $\frac{3}{8}" = 1'-0"$  (ON 24 x 36 SHEET)

**OWNER:** STEFAN VOGEL, stefan@buildbys2.com, 626.277.6782  
**COACHELLA VALLEY COMMUNITY DEVELOPMENT GROUP**  
 36101 BOB HOPE DRIVE, SUITE E5, RANCHO MIRAGE, CA 92270

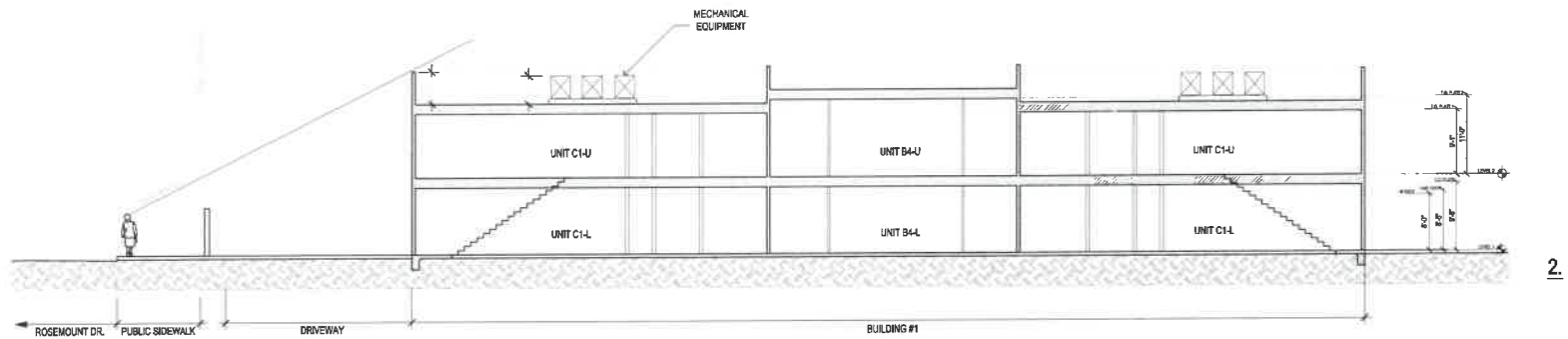
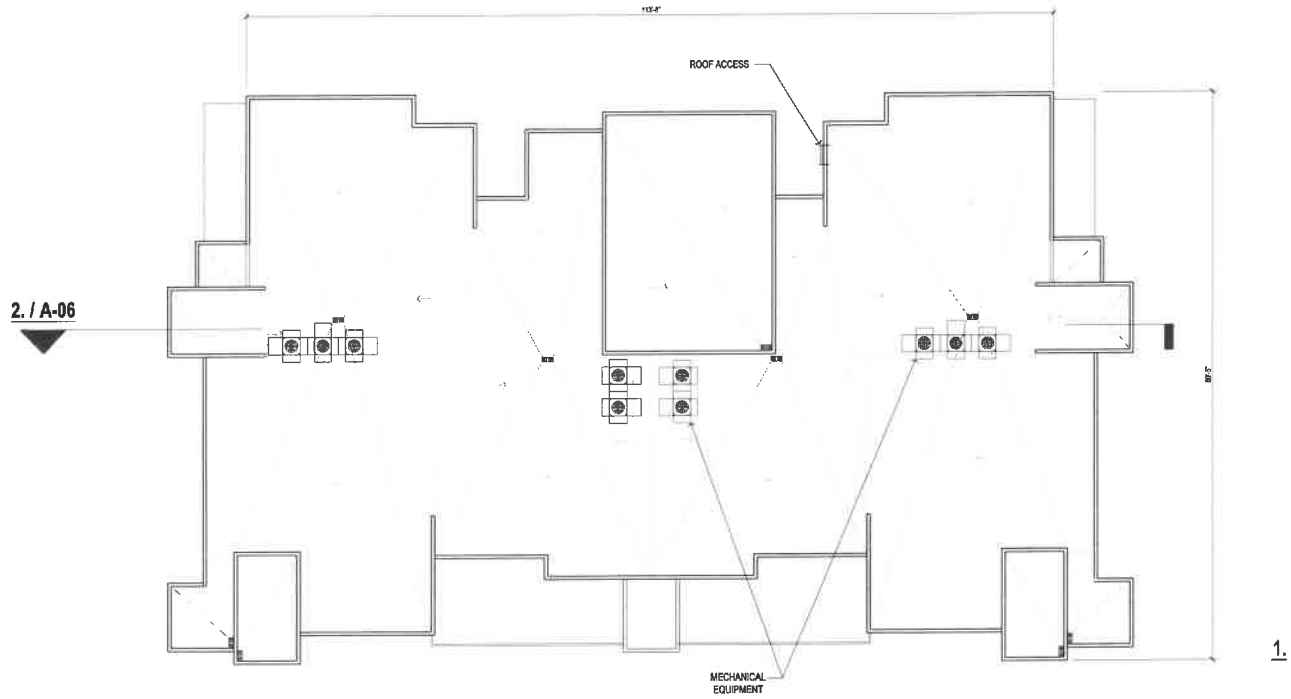
© 2022 by the author(s). Published by John Wiley & Sons, Ltd. *J. Forecast.* **42**, 1–16 (2023) DOI: 10.1002/for.2671



PROJECT: **THE WREN**  
 ROSEMOUNT AVE., CATHEDRAL CITY, APN 670-110-043  
 HPA PROJECT# 2023158 PLANNING # 23-001

ARCHITECT: VELY ZAJEC, vely@humphreys.com, 949.468.5866  
**HUMPHREYS & PARTNERS ARCHITECTS, L.P.**  
 5339 Alpha Rd., Suite 300, Dallas, TX 75240 | 972.701.9636 | www.humphreys.com

OWNER: STEFAN VOGEL, stefan@buildbys2.com, 626.277.6762  
**COACHELLA VALLEY COMMUNITY DEVELOPMENT GROUP**  
 38101 BOB HOPE DRIVE, SUITE E5, RANCHO MIRAGE, CA 92270



0' 8' 16' 32'

SCALE  $\frac{1}{8}" = 1'-0"$  (ON 24 x 36 SHEET)

PROJECT: **THE WREN**  
 ROSEMOUNT AVE., CATHEDRAL CITY, APN 670-110-043  
 HPA PROJECT# 2023158 PLANNING # 23-001

ARCHITECT: VELY ZAJEC, vely@humphreys.com, 949.468.5866  
**HUMPHREYS & PARTNERS ARCHITECTS, L.P.**  
 5339 Alpha Rd., Suite 300, Dallas, TX 75240 | 972.701.9636 | www.humphreys.com

OWNER: STEFAN VOGEL, stefan@buildbys2.com, 626.277.6782  
**COACHELLA VALLEY COMMUNITY DEVELOPMENT GROUP**  
 36101 BOB HOPE DRIVE, SUITE E5, RANCHO MIRAGE, CA 92270

© 2023 by HUMPHREYS & PARTNERS ARCHITECTS, L.P. The architectural drawings herein are the sole property of Humphreys & Partners Architects, L.P. and may not be reproduced in any form without the written permission. Architectural drawings and plans are for informational purposes only. Decisions may occur due to further investigation from regulatory authorities and building code analysis. Dimensions shown are at a strategic intent only. Refer to drawings and detail drawings for technical information and measurements.



0' 8' 16' 32'  
SCALE  $\frac{1}{8}" = 1'-0"$  (ON 24 x 36 SHEET)

PROJECT: **THE WREN**  
ROSEMOUNT AVE., CATHEDRAL CITY, APN 670-110-043  
HPA PROJECT# 2023158 PLANNING # 23-001

ARCHITECT: VELY ZAJEC, vely@humphreys.com, 949.468.5866  
**HUMPHREYS & PARTNERS ARCHITECTS, L.P.**  
5339 Alpha Rd., Suite 300, Dallas, TX 75240 | 972.701.9636 | www.humphreys.com

OWNER: STEFAN VOGEL, stefan@buildbys2.com, 626.277.6782  
**COACHELLA VALLEY COMMUNITY DEVELOPMENT GROUP**  
38101 BOB HOPE DRIVE, SUITE E5, RANCHO MIRAGE, CA 92270

© 2023 by HUMPHREYS & PARTNERS ARCHITECTS, L.P. The arrangements depicted herein are the sole property of Humphreys & Partners Architects, L.P. and may not be reproduced in any form without its written permission. Architectural conceptual site plans are for feasibility purposes only. Dimensions may differ due to various investigations from regulatory authorities and building code analysis. Dimensions shown are at a strategic level only. Refer to survey and civil drawings for technical information and measurements.



3.



4.

0' 8' 16' 32'  
SCALE 1/4" = 1'-0" (ON 24 x 36 SHEET)

PROJECT: **THE WREN**  
ROSEMOUNT AVE., CATHEDRAL CITY, APN 870-110-043  
HPA PROJECT# 2023156 PLANNING # 23-001

ARCHITECT: VELY ZAJEC, vely@humphreys.com, 949.468.5866  
**HUMPHREYS & PARTNERS ARCHITECTS, L.P.**  
5339 Alpha Rd., Suite 300, Dallas, TX 75240 | 972.701.9636 | www.humphreys.com

OWNER: STEFAN VOGEL, stefan@bulldogs2.com, 626.277.6782  
**COACHELLA VALLEY COMMUNITY DEVELOPMENT GROUP**  
36101 BOB HOPE DRIVE, SUITE E5, RANCHO MIRAGE, CA 92270

© 2023 by HUMPHREYS & PARTNERS ARCHITECTS, L.P. The arrangements depicted herein are the sole property of Humphreys & Partners Architects, L.P. and may not be reproduced in any form without the written permission. Architectural description also plans are for informational purposes only. Dimensions may vary due to further investigation from regulatory authorities and building code analysis. Drawings shown are of a conceptual nature only. Refer to permit and final drawings for detailed information and measurements.



0' 8' 16' 32'  
 SCALE  $\frac{1}{8}" = 1'-0"$  (ON 24 x 36 SHEET)

PROJECT: **THE WREN**  
 ROSEMOUNT AVE., CATHEDRAL CITY, APN 670-110-043  
 HPA PROJECT# 2023158 PLANNING # 23-001

ARCHITECT: VELY ZAJEC, vely@humphreys.com, 949.468.5866  
**HUMPHREYS & PARTNERS ARCHITECTS, L.P.**  
 5339 Alpha Rd., Suite 300, Dallas, TX 75240 | 972.701.9636 | www.humphreys.com

OWNER: STEFAN VOGEL, stefan@buldbys2.com, 626.277.6782  
**COACHELLA VALLEY COMMUNITY DEVELOPMENT GROUP**  
 36101 BOB HOPE DRIVE, SUITE E5, RANCHO MIRAGE, CA 92270

© 2022 by HUMPHREYS & PARTNERS ARCHITECTS, L.P. The arrangements depicted herein are the sole property of Humphreys & Partners Architects, L.P. and may not be reproduced in any form without the written permission. Architectural elevations are site plans and for reference purposes only. Decisions may differ due to further investigation from regulatory authorities and building code updates. Windows and doors are at a strategic layout only. Refer to drawings and shall drawings for technical information and measurements.





3.



4.

0' 8' 16' 32'  
SCALE  $\frac{1}{8}" = 1'-0"$  (ON 24 x 36 SHEET)

PROJECT: **THE WREN**  
ROSEMOUNT AVE., CATHEDRAL CITY, APN 670-110-043  
HPA PROJECT# 2023158 PLANNING # 23-001

ARCHITECT: VELY ZAJEC, vely@humphreys.com, 948.468.5866  
**HUMPHREYS & PARTNERS ARCHITECTS, L.P.**  
5339 Alpha Rd., Suite 300, Dallas, TX 75240 | 972.701.9636 | www.humphreys.com

OWNER: STEFAN VOGEL, stefan@buildbys2.com, 626.277.6782  
**COACHELLA VALLEY COMMUNITY DEVELOPMENT GROUP**  
38101 BOB HOPE DRIVE, SUITE E5, RANCHO MIRAGE, CA 92270

© 2023 by HUMPHREYS & PARTNERS ARCHITECTS, L.P. The arrangements depicted herein are the sole property of Humphreys & Partners Architects, L.P. and may not be reproduced in any form without its written permission. Architectural conceptual site plans are for readability purposes only. Dimensions may vary due to further investigations from regulatory authorities and building code analysis. Dimensions shown are at a planning intent only. Refer to passage and civil drawings for detailed information and measurements.