

RESOLUTION NO. 21254

OF THE CITY COUNCIL OF THE CITY OF PALM SPRINGS, CALIFORNIA, APPROVING FINAL MAP 32233-3 FOR PROPERTY LOCATED ALONG THE EAST SIDE OF GENE AUTRY TRAIL, SOUTH OF VISTA CHINO, IN SECTIONS 7 AND 18, TOWNSHIP 4 SOUTH, RANGE 5 EAST, AND APPROVING A SUBDIVISION IMPROVEMENT AGREEMENT WITH PALM SPRINGS CLASSIC, LLC, A DELAWARE LIMITED LIABILITY COMPANY A05088

-----

WHEREAS, the Planning Commission, at its meeting of October 13, 2004, recommended approval of Tentative Tract Map 32233, prepared by MSA Consulting, Inc., representing Palm Springs Classic, LLC, a Delaware Limited Liability Company, for the above described property; and

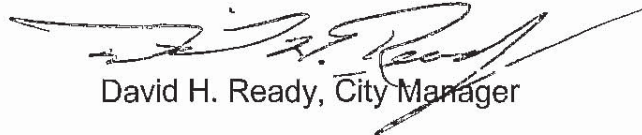
WHEREAS, the City Council at its meeting of November 17, 2004, approved Tentative Tract Map 32233 subject to conditions; and

WHEREAS, the owner offers for dedication to the City of Palm Springs easements for public utility and sewer purposes shown as "3' PUE" and "10' PUE", along and adjacent to all private streets; easements for public utility and sewer purposes, together with the right of ingress and egress for service and emergency vehicles and personnel, over Lots "A" through "O", inclusive; and easements for public utility and sewer purposes over Lots "P" through "R".

NOW THEREFORE BE IT RESOLVED by the City Council of the City of Palm Springs as follows:

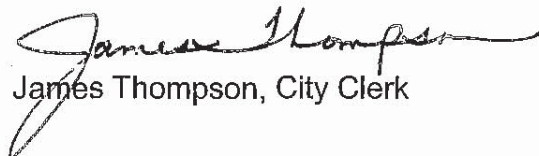
1. That Final Map 32233-3 is in substantial conformance with approved Tentative Tract Map 32233; and
2. That requisite conditions associated with Tentative Tract Map 32233 have been satisfied; and
3. That Final Map 32233-3 is in conformance with the General Plan; and
4. That Final Map 32233-3 conforms to all requirements of the Subdivision Map Act of the State of California; and
5. That the offers of dedication to the public on Final Map 32233-3 shall be accepted by the City Clerk of the City of Palm Springs; and
6. That the City Manager is hereby authorized to enter into a Subdivision Improvement Agreement with the subdivider and to accept subdivision improvement security in conformance with the requirements therein for construction of required public improvements; and
7. That the City Clerk shall cause to have recorded with the Riverside County Recorder the Subdivision Improvement Agreement; and
8. That Final Map 32233-3 is hereby approved for purposes therein defined.

ADOPTED THIS 4th day of May, 2005.



David H. Ready, City Manager

ATTEST:



James Thompson, City Clerk

CERTIFICATION

STATE OF CALIFORNIA )  
COUNTY OF RIVERSIDE ) ss.  
CITY OF PALM SPRINGS )

I, JAMES THOMPSON, City Clerk of the City of Palm Springs, hereby certify that Resolution No. 21254 is a full, true and correct copy, and was duly adopted at a regular meeting of the City Council of the City of Palm Springs on May 4, 2005, by the following vote:

AYES: Members Foat, Mills, McCulloch, Pougnet and Mayor Oden  
NOES: None  
ABSENT: None  
ABSTAIN: None



James Thompson, City Clerk  
City of Palm Springs, California

NOTARY'S ACKNOWLEDGMENT

STATE OF CALIFORNIA )  
COUNTY OF Riverside )  
SS

ON April 14, 2005, BEFORE ME, Lynda M. Davis,  
A NOTARY PUBLIC IN AND FOR SAID STATE, PERSONALLY APPEARED  
PERSONALLY KNOWN TO ME AND PROVED TO ME BY OATH AND AFFIRMATION  
TO BE THE PERSON(S) WHOSE NAME(S) IS/ARE SUBSCRIBED TO THE WITHIN INSTRUMENT AND  
ACKNOWLEDGED TO ME THAT HE/SHE/IT/THEY EXECUTED THE SAME IN HIS/HER/ITS/THEIR AUTHORIZED  
CAPACITY(IES), AND THAT BY HIS/HER/ITS/THEIR SIGNATURE(S) ON THE INSTRUMENT THE PERSON(S),  
OR THE ENTITY UPON BEHALF OF WHICH THE PERSON(S) ACTED, EXECUTED THE INSTRUMENT.

MY COMMISSION EXPIRES 12/25/07.

MY PRINCIPAL PLACE OF BUSINESS  
IS Riverside COUNTY

Lynda M. Davis  
NOTARY PUBLIC IN AND FOR SAID STATE  
(PRINT NAME)

NOTARY'S ACKNOWLEDGMENT

STATE OF CALIFORNIA )  
COUNTY OF Los Angeles )  
SS

ON April 14, 2005, BEFORE ME, Sonia E. Garcia,  
A NOTARY PUBLIC IN AND FOR SAID STATE, PERSONALLY APPEARED  
PERSONALLY KNOWN TO ME AND PROVED TO ME BY OATH AND AFFIRMATION  
TO BE THE PERSON(S) WHOSE NAME(S) IS/ARE SUBSCRIBED TO THE WITHIN INSTRUMENT AND  
ACKNOWLEDGED TO ME THAT HE/SHE/IT/THEY EXECUTED THE SAME IN HIS/HER/ITS/THEIR AUTHORIZED  
CAPACITY(IES), AND THAT BY HIS/HER/ITS/THEIR SIGNATURE(S) ON THE INSTRUMENT THE PERSON(S),  
OR THE ENTITY UPON BEHALF OF WHICH THE PERSON(S) ACTED, EXECUTED THE INSTRUMENT.

MY COMMISSION EXPIRES May 9, 2007.

MY PRINCIPAL PLACE OF BUSINESS  
IS Los Angeles COUNTY

Sonia E. Garcia  
NOTARY PUBLIC IN AND FOR SAID STATE  
(PRINT NAME)

NOTARY'S ACKNOWLEDGMENT

STATE OF California )  
COUNTY OF Oakland )  
SS

ON April 14, 2005, BEFORE ME, David J. O'Brien,  
A NOTARY PUBLIC IN AND FOR SAID STATE, PERSONALLY APPEARED  
PERSONALLY KNOWN TO ME (OR PROVED TO ME BY OATH AND AFFIRMATION)  
TO BE THE PERSON(S) WHOSE NAME(S) IS/ARE SUBSCRIBED TO THE WITHIN INSTRUMENT AND  
ACKNOWLEDGED TO ME THAT HE/SHE/IT/THEY EXECUTED THE SAME IN HIS/HER/ITS/THEIR AUTHORIZED  
CAPACITY(IES), AND THAT BY HIS/HER/ITS/THEIR SIGNATURE(S) ON THE INSTRUMENT THE PERSON(S),  
OR THE ENTITY UPON BEHALF OF WHICH THE PERSON(S) ACTED, EXECUTED THE INSTRUMENT.

MY COMMISSION EXPIRES 08/31/05.

MY PRINCIPAL PLACE OF BUSINESS  
IS Marina COUNTY

David J. O'Brien  
NOTARY PUBLIC IN AND FOR SAID STATE  
(PRINT NAME)

IN THE CITY OF PALM SPRINGS, COUNTY OF RIVERSIDE, STATE OF CALIFORNIA  
**TRACT MAP NO. 32233-3**  
BEING A SUBDIVISION OF PORTIONS OF SECTION 7 AND THE  
NORTH HALF OF SECTION 18, TOWNSHIP 4 SOUTH, RANGE 5 EAST, S.B.M.  
MSA CONSULTING, INC. JANUARY - 2005

ENGINEER'S NOTES

- THE BASE OF ~~SECT~~ FOR THE MAP IS THE NORTHERLY LINE OF THE  
NORTHEAST QUARTER OF SECTION 7, T. 4 S. R. 5 E. S.B.M. ALSO BEING  
THE CONTINUE OF VISTA CHINO, AS SHOWN ON PARCEL MAP NO. 27912.  
PER P.M.B. 183/25-37, TAKEN AS N 89°11'1" W
- INDICATES FOUND 1" IP W/TAG R.C.E. 26401", FLUSH, PER TRACT  
MAP NO. 32233-1, M.B. UNLESS NOTED OTHERWISE.
- INDICATES FOUND 1-1/4" BRASS DISK STAMPED "R.C.E. 26401",  
FLUSH, IN A.C. PAWT (RW, CO. STD. TYPE "B" MON). PER TRACT  
MAP NO. 32233-1, M.B. UNLESS NOTED OTHERWISE.
- INDICATES SET 1" IP, WITH PLASTIC PLUG STAMPED "R.C.E. 26401",  
FLUSH, UNLESS NOTED OTHERWISE.
- INDICATES SET 1-1/4" BRASS DISK STAMPED "R.C.E. 26401", FLUSH,  
IN A.C. PAWT (RW, CO. STD. TYPE "B" MON).
- INDICATES RECORD DATA PER PARCEL MAP NO. 27912.  
PER P.M.B. 183/25-37, AND MEASURED.
- INDICATES RECORD AND MEASURED DATA PER TRACT MAP NO. 32233-1,  
M.B. UNLESS NOTED OTHERWISE.
- INDICATES CENTERLINE
- R/W INDICATES RIGHT-OF-WAY
- CWMD CONCRETE VALLEY WATER DISTRICT
- PUE INDICATES PUBLIC UTILITY EASEMENT
- SET NAIL AND TAG IN TOP OF CURB ON THE PROLONGATION OF ALL SIDE  
LOT LINES, STAMPED "R.C.E. 26401", IN LHD OF THE FRONT LOT CORNERS.
- SET 1" IP, WITH PLASTIC PLUG STAMPED "R.C.E. 26401", SET NAIL AND TAG IN  
CONC. FOOTING STAMPED "R.C.E. 26401" OR NAIL AND TAG IN FENCING MATERIAL,  
TAGGED "R.C.E. 26401", AS APPROPRIATE, AT REAR LOT CORNERS AND ANGLE  
POINTS, UNLESS OTHERWISE NOTED.
- TOTAL GROSS AREA = 20,206 ACRES
- NUMBERED LOTS = 95 LOTS
- LETTERED PRIVATE STREET LOTS = 15 LOTS
- OPEN SPACE LETTERED LOTS = 3 LOTS

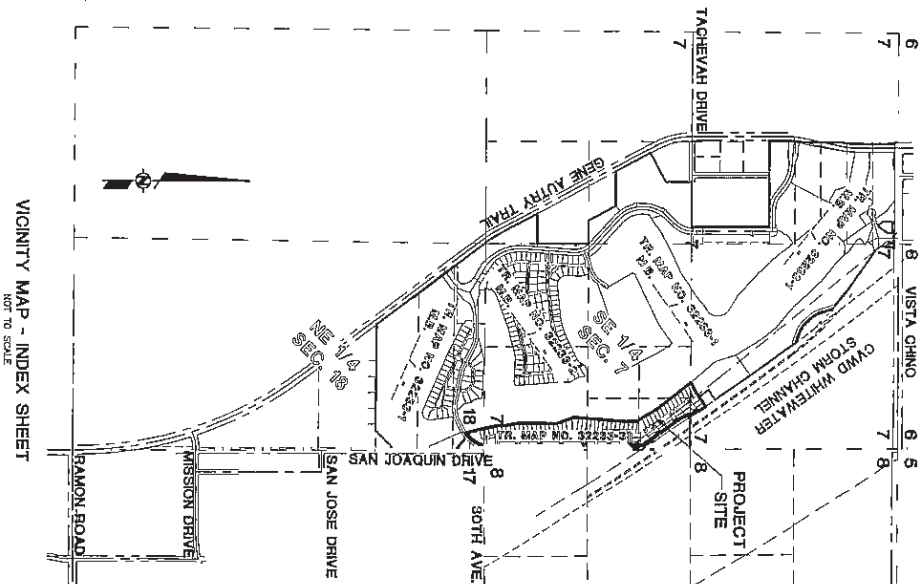
EASEMENT NOTES

- AN EASEMENT FOR DRAINAGE, INGRESS, EGRESS AND INCIDENTAL PURPOSES, IN FAVOR OF  
THE CONCRETE VALLEY WATER DISTRICT, REC. 12/19/90, AS INST. NO. 109771, D.R.
- AN EASEMENT FOR INGRESS AND EGRESS, 20' IN WIDTH, IN FAVOR OF DESERT  
WATER AGENCY, REC. 9/24/99, AS INST. NO. 1999-427786, OR
- AN EASEMENT FOR FLOOD CONTROL, 200' IN WIDTH, IN FAVOR OF THE RIVERSIDE COUNTY  
FLOOD CONTROL AND WATER CONSERVATION DISTRICT AS SHOWN ON THE WHITEWATER RIVER  
CHANNEL FIELD SURVEY ALIGNMENT MAP DATED 10/17/96, ON FILE WITH THE RIVERSIDE  
COUNTY SURVEYOR AS MAP NO. 800-N.

SIGNATURE OMISSIONS

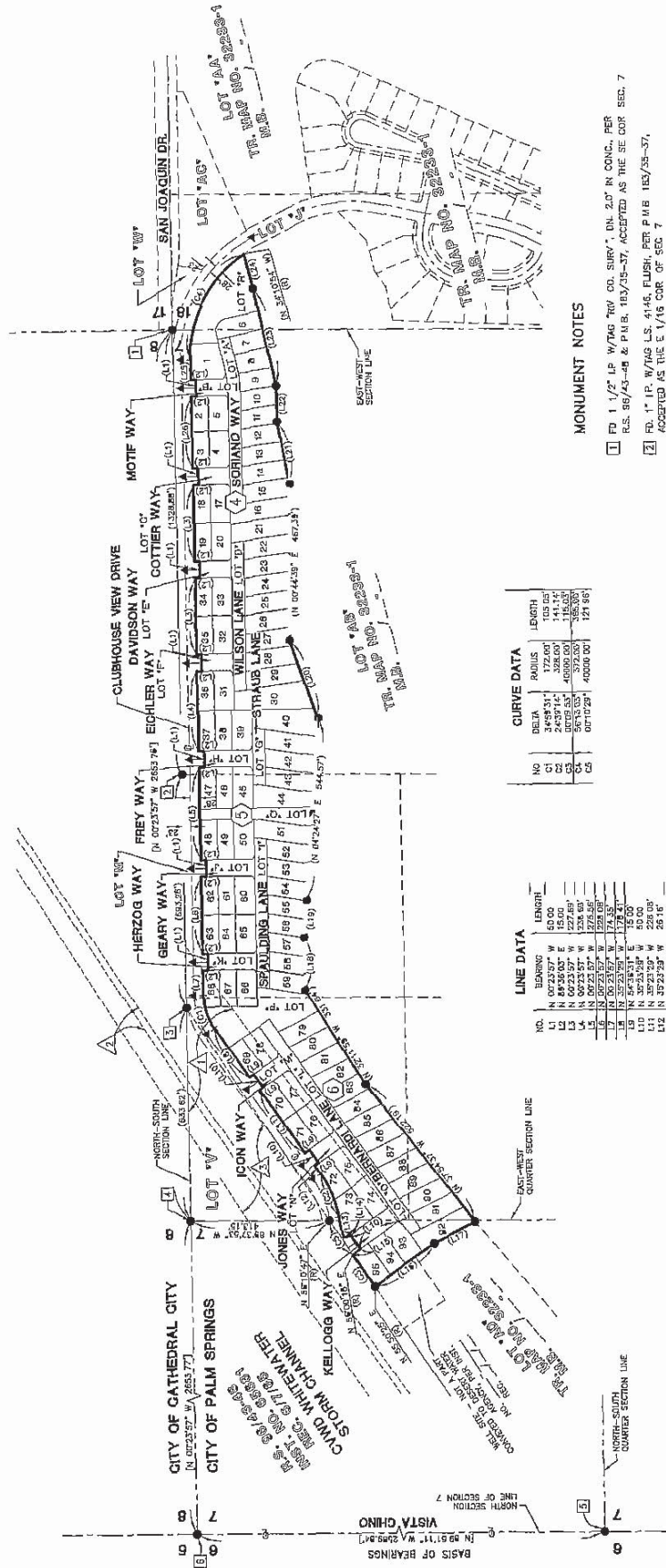
PURSUANT TO SECTION 6600 OF THE SUBDIVISION MAP ACT, THE SIGNATURE(S)  
OF THE FOLLOWING OWNER(S) OF EASEMENTS AND/OR OTHER INTERESTS HAVE  
BEEN OMITTED, AS THEIR INTERESTS CANNOT RISE INTO FEE.

CONCRETE VALLEY WATER DISTRICT, HOLDER OF AN EASEMENT FOR DRAINAGE, INGRESS,  
EGRESS AND INCIDENTAL PURPOSES, PER INST. NO. 109771, REC. 12/19/90, D.R.  
RIVERSIDE COUNTY FLOOD CONTROL, AND WATER CONSERVATION DISTRICT, HOLDER OF  
AN EASEMENT FOR FLOOD CONTROL, 200' IN WIDTH, IN FAVOR OF THE WHITEWATER RIVER  
CHANNEL FIELD SURVEY ALIGNMENT MAP DATED 10/17/96, ON FILE WITH THE  
DESSERT WATER AGENCY, HOLDER OF AN EASEMENT FOR INGRESS AND EGRESS,  
PER INST. NO. 1999-427786, REC. 9/24/99, D.R.



SHEET 3 OF 6 SHEETS

IN THE CITY OF PALM SPRINGS, COUNTY OF RIVERSIDE, STATE OF CALIFORNIA  
**TRACT MAP NO. 32233-3**  
BEING A SUBDIVISION OF PORTIONS OF SECTION 7 AND THE  
NORTH HALF OF SECTION 18, TOWNSHIP 4 SOUTH, RANGE 5 EAST, S.B.M.  
JANUARY - 2005  
MSA CONSULTING, INC.



**CURVE DATA**

| NO. | DELTA    | RADIUS    | LENGTH  |
|-----|----------|-----------|---------|
| 1   | 243°14'  | 328.00'   | 141.14' |
| 2   | 116.00'  | 4000.00'  | 116.00' |
| 3   | 0°17'25" | 40200.00' | 129.85' |

**LINE DATA**

| NO.  | BEARING       | LENGTH  |
|------|---------------|---------|
| L1   | N 00°23'57" W | 50.00   |
| L2   | N 00°23'57" W | 127.86' |
| L3   | N 00°23'57" W | 127.86' |
| L4   | N 00°23'57" W | 127.86' |
| L5   | N 00°23'57" W | 127.86' |
| L6   | N 00°23'57" W | 127.86' |
| L7   | N 00°23'57" W | 127.86' |
| L8   | N 00°23'57" W | 127.86' |
| L9   | N 00°23'57" W | 127.86' |
| L10  | N 00°23'57" W | 127.86' |
| L11  | N 00°23'57" W | 127.86' |
| L12  | N 00°23'57" W | 127.86' |
| L13  | N 00°23'57" W | 127.86' |
| L14  | N 00°23'57" W | 127.86' |
| L15  | N 00°23'57" W | 127.86' |
| L16  | N 00°23'57" W | 127.86' |
| L17  | N 00°23'57" W | 127.86' |
| L18  | N 00°23'57" W | 127.86' |
| L19  | N 00°23'57" W | 127.86' |
| L20  | N 00°23'57" W | 127.86' |
| L21  | N 00°23'57" W | 127.86' |
| L22  | N 00°23'57" W | 127.86' |
| L23  | N 00°23'57" W | 127.86' |
| L24  | N 00°23'57" W | 127.86' |
| L25  | N 00°23'57" W | 127.86' |
| L26  | N 00°23'57" W | 127.86' |
| L27  | N 00°23'57" W | 127.86' |
| L28  | N 00°23'57" W | 127.86' |
| L29  | N 00°23'57" W | 127.86' |
| L30  | N 00°23'57" W | 127.86' |
| L31  | N 00°23'57" W | 127.86' |
| L32  | N 00°23'57" W | 127.86' |
| L33  | N 00°23'57" W | 127.86' |
| L34  | N 00°23'57" W | 127.86' |
| L35  | N 00°23'57" W | 127.86' |
| L36  | N 00°23'57" W | 127.86' |
| L37  | N 00°23'57" W | 127.86' |
| L38  | N 00°23'57" W | 127.86' |
| L39  | N 00°23'57" W | 127.86' |
| L40  | N 00°23'57" W | 127.86' |
| L41  | N 00°23'57" W | 127.86' |
| L42  | N 00°23'57" W | 127.86' |
| L43  | N 00°23'57" W | 127.86' |
| L44  | N 00°23'57" W | 127.86' |
| L45  | N 00°23'57" W | 127.86' |
| L46  | N 00°23'57" W | 127.86' |
| L47  | N 00°23'57" W | 127.86' |
| L48  | N 00°23'57" W | 127.86' |
| L49  | N 00°23'57" W | 127.86' |
| L50  | N 00°23'57" W | 127.86' |
| L51  | N 00°23'57" W | 127.86' |
| L52  | N 00°23'57" W | 127.86' |
| L53  | N 00°23'57" W | 127.86' |
| L54  | N 00°23'57" W | 127.86' |
| L55  | N 00°23'57" W | 127.86' |
| L56  | N 00°23'57" W | 127.86' |
| L57  | N 00°23'57" W | 127.86' |
| L58  | N 00°23'57" W | 127.86' |
| L59  | N 00°23'57" W | 127.86' |
| L60  | N 00°23'57" W | 127.86' |
| L61  | N 00°23'57" W | 127.86' |
| L62  | N 00°23'57" W | 127.86' |
| L63  | N 00°23'57" W | 127.86' |
| L64  | N 00°23'57" W | 127.86' |
| L65  | N 00°23'57" W | 127.86' |
| L66  | N 00°23'57" W | 127.86' |
| L67  | N 00°23'57" W | 127.86' |
| L68  | N 00°23'57" W | 127.86' |
| L69  | N 00°23'57" W | 127.86' |
| L70  | N 00°23'57" W | 127.86' |
| L71  | N 00°23'57" W | 127.86' |
| L72  | N 00°23'57" W | 127.86' |
| L73  | N 00°23'57" W | 127.86' |
| L74  | N 00°23'57" W | 127.86' |
| L75  | N 00°23'57" W | 127.86' |
| L76  | N 00°23'57" W | 127.86' |
| L77  | N 00°23'57" W | 127.86' |
| L78  | N 00°23'57" W | 127.86' |
| L79  | N 00°23'57" W | 127.86' |
| L80  | N 00°23'57" W | 127.86' |
| L81  | N 00°23'57" W | 127.86' |
| L82  | N 00°23'57" W | 127.86' |
| L83  | N 00°23'57" W | 127.86' |
| L84  | N 00°23'57" W | 127.86' |
| L85  | N 00°23'57" W | 127.86' |
| L86  | N 00°23'57" W | 127.86' |
| L87  | N 00°23'57" W | 127.86' |
| L88  | N 00°23'57" W | 127.86' |
| L89  | N 00°23'57" W | 127.86' |
| L90  | N 00°23'57" W | 127.86' |
| L91  | N 00°23'57" W | 127.86' |
| L92  | N 00°23'57" W | 127.86' |
| L93  | N 00°23'57" W | 127.86' |
| L94  | N 00°23'57" W | 127.86' |
| L95  | N 00°23'57" W | 127.86' |
| L96  | N 00°23'57" W | 127.86' |
| L97  | N 00°23'57" W | 127.86' |
| L98  | N 00°23'57" W | 127.86' |
| L99  | N 00°23'57" W | 127.86' |
| L100 | N 00°23'57" W | 127.86' |

**MONUMENT NOTES**

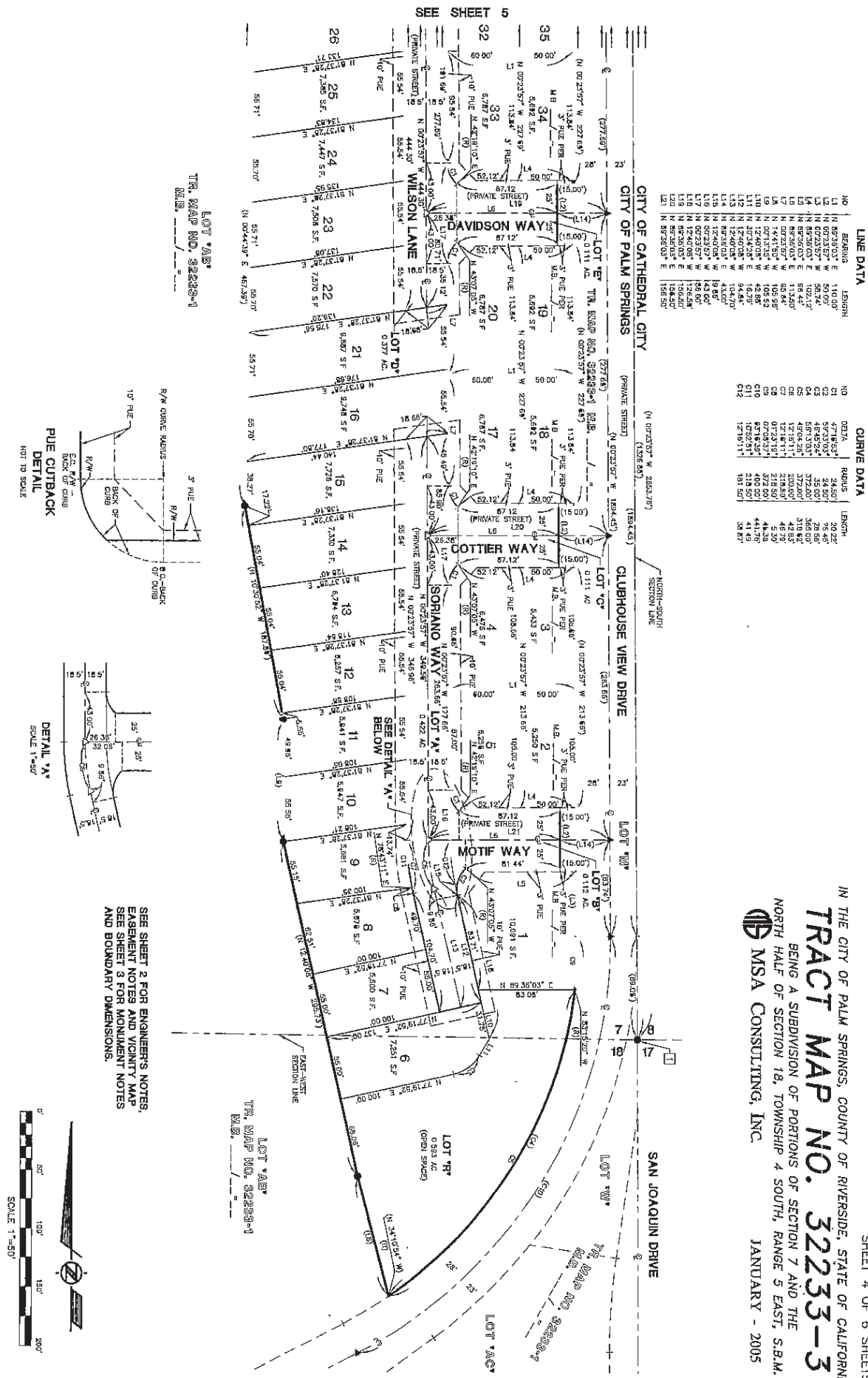
- [1] PD 1 1/2" LP W/TAG "W" CO. SURV., DN. 2.0' IN CONC., PER R.S. 95/43-48 & P.M.B. 183/35-37, ACCEPTED AS THE SE COR. SEC. 7
- [2] PD 1" IP W/TAG L.S. 4148, FLUSH, PER P.M.B. 183/35-37, ACCEPTED AS THE E 1/4 COR. OF SEC. 7
- [3] PD 3/4" LP W/TAG "R.C.F.C. & W.C.D.", FLUSH, PER R.S. 95/43-48, ACCEPTED AS THE RT. OF THE SW LINE OF THE RW. CO. FLOOD CONTROL R/W & THE ELY. LINE OF THE SE 1/4 SEC. 7
- [4] PD 1" IP W/TAG L.S. 4148, FLUSH, PER P.M.B. 183/35-37 & R.S. 95/43-48, ACCEPTED AS THE E 1/4 COR. SEC. 7
- [5] PD 2X2 W/TAG "W" CO. SURV., DN. 0.5', PER R.S. 67/95-86 & P.M.B. 183/35-37, ACCEPTED AS THE N 1/4 COR. SEC. 7
- [6] PD 1 1/2" LP W/TAG "W" CO. SURV., DN. 0.5' IN MON. WELL, PER R.S. 67/95-86 & P.M.B. 183/35-37, ACCEPTED AS THE NE COR. SEC. 7


SEE SHEET 2 FOR ENGINEER'S NOTES  
EASEMENT NOTES VICINITY MAP  
SEE SHEETS 4 THROUGH 6 FOR  
DETAILED LOT DIMENSIONS.  
INDICATES SHEET NUMBER



0005

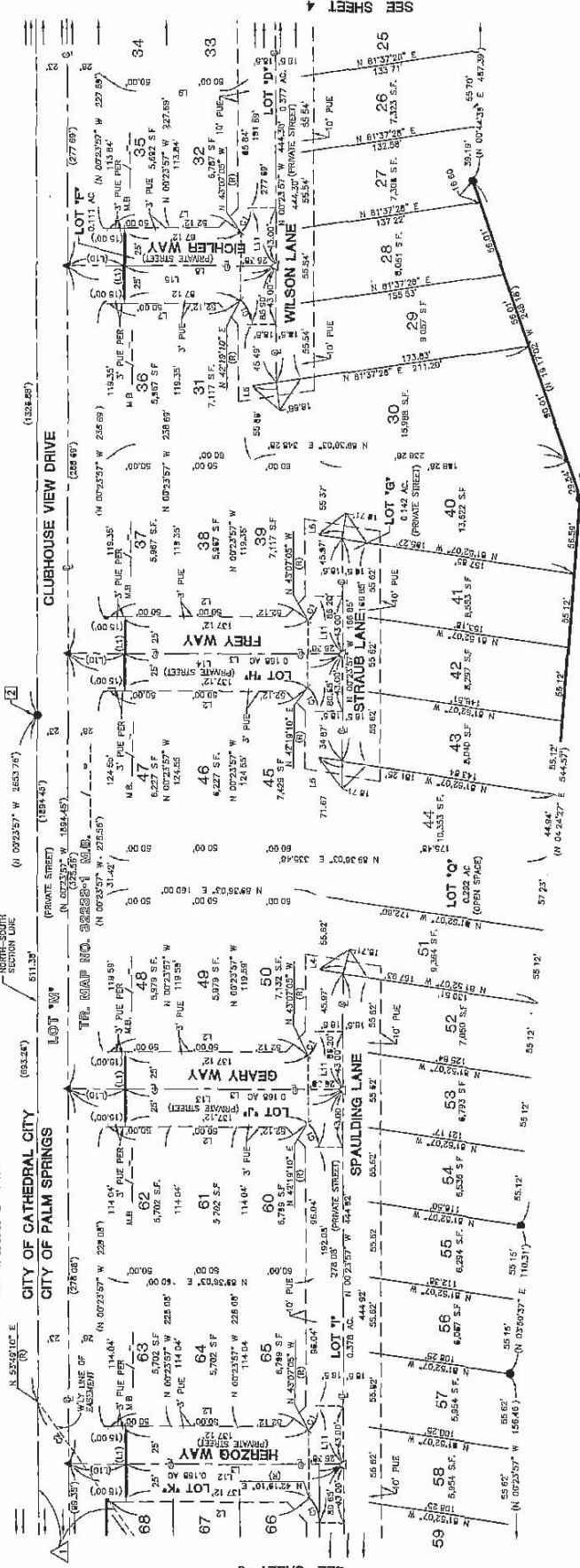




IN THE CITY OF PALM SPRINGS, COUNTY OF RIVERSIDE, STATE OF CALIFORNIA  
**TRACT MAP NO. 32233-3**  
 BEING A SUBDIVISION OF PORTIONS OF SECTION 7 AND THE  
 NORTH HALF OF SECTION 18, TOWNSHIP 4 SOUTH, RANGE 5 EAST, S.E.M.  
 MSA CONSULTING, INC. JANUARY - 2005

SHEET 5 OF 6 SHEETS  
IN THE CITY OF PALM SPRINGS, COUNTY OF RIVERSIDE, STATE OF CALIFORNIA  
**TRACT MAP NO. 32233-3**  
BEING A SUBDIVISION OF PORTIONS OF SECTION 7 AND THE  
NORTH HALF OF SECTION 18, TOWNSHIP 4 SOUTH, RANGE 5 EAST, S.B.M.  
**MSA CONSULTING, INC.** JANUARY - 2005

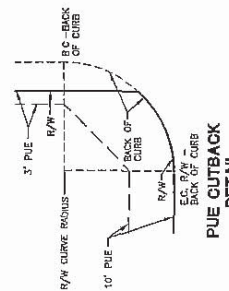
| LINE DATA |               |        |            |
|-----------|---------------|--------|------------|
| NO.       | BEARING       | LENGTH | CURVE DATA |
| 1         | N 89°30'00" E | 50.00  | DELTA 137° |
| 2         | N 89°30'00" E | 152.12 | DELTA 137° |
| 3         | N 89°30'00" E | 163.50 | DELTA 137° |
| 4         | N 89°30'00" E | 168.55 | DELTA 137° |
| 5         | N 89°30'00" E | 168.55 | DELTA 137° |
| 6         | N 89°30'00" E | 168.55 | DELTA 137° |
| 7         | N 89°30'00" E | 168.55 | DELTA 137° |
| 8         | N 89°30'00" E | 168.55 | DELTA 137° |
| 9         | N 89°30'00" E | 168.55 | DELTA 137° |
| 10        | N 89°30'00" E | 168.55 | DELTA 137° |
| 11        | N 89°30'00" E | 168.55 | DELTA 137° |
| 12        | N 89°30'00" E | 168.55 | DELTA 137° |
| 13        | N 89°30'00" E | 168.55 | DELTA 137° |
| 14        | N 89°30'00" E | 168.55 | DELTA 137° |
| 15        | N 89°30'00" E | 168.55 | DELTA 137° |
| 16        | N 89°30'00" E | 168.55 | DELTA 137° |
| 17        | N 89°30'00" E | 168.55 | DELTA 137° |
| 18        | N 89°30'00" E | 168.55 | DELTA 137° |
| 19        | N 89°30'00" E | 168.55 | DELTA 137° |
| 20        | N 89°30'00" E | 168.55 | DELTA 137° |
| 21        | N 89°30'00" E | 168.55 | DELTA 137° |
| 22        | N 89°30'00" E | 168.55 | DELTA 137° |
| 23        | N 89°30'00" E | 168.55 | DELTA 137° |
| 24        | N 89°30'00" E | 168.55 | DELTA 137° |
| 25        | N 89°30'00" E | 168.55 | DELTA 137° |
| 26        | N 89°30'00" E | 168.55 | DELTA 137° |
| 27        | N 89°30'00" E | 168.55 | DELTA 137° |
| 28        | N 89°30'00" E | 168.55 | DELTA 137° |
| 29        | N 89°30'00" E | 168.55 | DELTA 137° |
| 30        | N 89°30'00" E | 168.55 | DELTA 137° |
| 31        | N 89°30'00" E | 168.55 | DELTA 137° |
| 32        | N 89°30'00" E | 168.55 | DELTA 137° |
| 33        | N 89°30'00" E | 168.55 | DELTA 137° |
| 34        | N 89°30'00" E | 168.55 | DELTA 137° |
| 35        | N 89°30'00" E | 168.55 | DELTA 137° |
| 36        | N 89°30'00" E | 168.55 | DELTA 137° |
| 37        | N 89°30'00" E | 168.55 | DELTA 137° |
| 38        | N 89°30'00" E | 168.55 | DELTA 137° |
| 39        | N 89°30'00" E | 168.55 | DELTA 137° |
| 40        | N 89°30'00" E | 168.55 | DELTA 137° |
| 41        | N 89°30'00" E | 168.55 | DELTA 137° |
| 42        | N 89°30'00" E | 168.55 | DELTA 137° |
| 43        | N 89°30'00" E | 168.55 | DELTA 137° |
| 44        | N 89°30'00" E | 168.55 | DELTA 137° |
| 45        | N 89°30'00" E | 168.55 | DELTA 137° |
| 46        | N 89°30'00" E | 168.55 | DELTA 137° |
| 47        | N 89°30'00" E | 168.55 | DELTA 137° |
| 48        | N 89°30'00" E | 168.55 | DELTA 137° |
| 49        | N 89°30'00" E | 168.55 | DELTA 137° |
| 50        | N 89°30'00" E | 168.55 | DELTA 137° |
| 51        | N 89°30'00" E | 168.55 | DELTA 137° |
| 52        | N 89°30'00" E | 168.55 | DELTA 137° |
| 53        | N 89°30'00" E | 168.55 | DELTA 137° |
| 54        | N 89°30'00" E | 168.55 | DELTA 137° |
| 55        | N 89°30'00" E | 168.55 | DELTA 137° |
| 56        | N 89°30'00" E | 168.55 | DELTA 137° |
| 57        | N 89°30'00" E | 168.55 | DELTA 137° |
| 58        | N 89°30'00" E | 168.55 | DELTA 137° |
| 59        | N 89°30'00" E | 168.55 | DELTA 137° |
| 60        | N 89°30'00" E | 168.55 | DELTA 137° |
| 61        | N 89°30'00" E | 168.55 | DELTA 137° |
| 62        | N 89°30'00" E | 168.55 | DELTA 137° |
| 63        | N 89°30'00" E | 168.55 | DELTA 137° |
| 64        | N 89°30'00" E | 168.55 | DELTA 137° |
| 65        | N 89°30'00" E | 168.55 | DELTA 137° |
| 66        | N 89°30'00" E | 168.55 | DELTA 137° |
| 67        | N 89°30'00" E | 168.55 | DELTA 137° |
| 68        | N 89°30'00" E | 168.55 | DELTA 137° |



LOT 26  
TR. MAP NO. 32233-3  
M.S.

LOT 26  
TR. MAP NO. 32233-3  
M.S.

SEE SHEET 2 FOR ENGINEER'S NOTES,  
EASEMENT NOTES AND VICINITY MAP  
SEE SHEET 3 FOR MONUMENT NOTES  
AND BOUNDARY DIMENSIONS.



00007

